



# User Manual

Ver 1.0

## FCC Compliance Statement

Model Name:

EH1-04

This device complies with Part 15 of the FCC Rules. Operation is Subject to the following two conditions: (1) this device may not cause harmful interference, and (2) this device must accept any interference received, including interference that may cause undesired operations.

### ■ WARNING

Unauthorized reproduction of all or part of this manual is strictly prohibited.

The figures in this manual are for illustration purposes only (may differ from the actual product).

The specifications and design of the product are subject to change without prior notice for purposes of quality improvement.

### ■ CAUTIONS

To get the best use out of the product, be sure to read the cautions before using the product. For safety, please take note of the following.

#### ● Instructions before using the product

- 1 To prevent electric shock when installing, moving, or opening the DVR and peripheral devices, connect and disconnect the cables as instructed. All cables must be connected to grounded power outlets.
- 2 If the product is installed near a power outlet, make sure it can be unplugged easily.
- 3 Do not use the DVR in water or in wet places.
- 4 Keep the plastic packing materials used for the DVR or other peripheral devices out of reach of children (may cause suffocation).

#### ● Installation Environment of the DVR

- 1 Maintain the following conditions: operating temperature of 5°C ~ 40°C; operating humidity of 10% ~ 80%.
- 2 Install the DVR in a safe place that is free from external vibration.
- 3 Install the DVR in a well-ventilated place.
- 4 To protect the hard disk from data loss and breakdown, install the DVR away from magnetic materials.
- 5 When using a rack other than the standard one, use a separate table with sufficient spacing, i.e., 60cm from the floor, 50cm from the ceiling, and 20cm from the side and back walls and other objects.





#### ● Safety Notes on the DVR

- 1 When installing additional boards and HDD, separate the power cable and turn OFF power supplied to the DVR completely.
- 2 Keep the product away from heat-generating devices such as heaters.
- 3 Do not use a damaged power cord.
- 4 To prevent problems due to magnetic interference and electric surge, use only grounded cables and power outlets.
- 5 If the power cord is connected, do not touch the power unit. If the power cord is connected, electric current is still flowing internally even after the switch is turned OFF.
- 6 Do not place a heavy object on top of the product.
- 7 Do not drop a conductive object in the ventilation holes.
- 8 Allot sufficient space for system cabling.
- 9 Use only the parts indicated in the manual. Do not disassemble, repair, or modify the product without permission.
- 10 Incorrect system setup may cause malfunction.
- 11 Shut down the system normally as instructed in the manual.

● **Safety Notes on the Lithium Battery**

- 1 Replace lithium batteries as instructed to avoid danger.
- 2 Dispose used lithium batteries properly.

[Warning and Caution are indicated as follows.]

 Warning	Possible injury or product damage.
 Caution	Risk of minor injury or product damage.
	Cautions for the usage of the product.
	Information for the usage of the product.

# Table of Contents



<b>Chapter 1 . Introduction .....</b>	<b>7</b>
1 - 1 EH1-04 Major Features .....	7
1 - 2 Components .....	8
1 - 3 Product Introduction .....	8
<b>Chapter 2 . Installation and connection .....</b>	<b>10</b>
2 - 1 EH1-04 Names and Features of Each Part.....	10
2 - 1 - 1 EH1-04 Rear Panel.....	10
2 - 2 Installation and Connection.....	11
2 - 2 - 1 Basic Connection .....	11
2 - 3 Connection of Other Devices.....	11
<b>Chapter 3 . Operation and Setup Tools.....</b>	<b>13</b>
3 - 1 EH1-04 Front Panel Button.....	13
3 - 2 EH1-04 Remote Controller.....	14
3 - 3 Mouse.....	14
<b>Chapter 4 . DVR Operation Setup.....</b>	<b>15</b>
4 - 1 Lite Series Storage Installation.....	15
4 - 2 Power ON.....	15
4 - 3 Storage Setup .....	16
4 - 4 Recording Setup.....	16
4 - 5 Date/Time Setup.....	16
4 - 6 Camera / TV Setup .....	17
4 - 7 Display Setting and Other Setup .....	17
4 - 8 External Device Setup .....	17
4 - 9 Search .....	17
4 - 1 0 Backup.....	17
4 - 1 1 DVR Info.....	17
<b>Chapter 5 . System Operation .....</b>	<b>18</b>
5 - 1 Real Time Monitoring Mode and Icon.....	18
5 - 2 System Login .....	19
5 - 2 - 1 User Account and Authorization .....	19
5 - 2 - 2 Login.....	20
5 - 2 - 3 Logout.....	20
5 - 3 Monitoring .....	20
5 - 3 - 1 Screen Division and Auto Sequence.....	20
5 - 3 - 2 Menu in Monitoring Mode .....	21
5 - 3 - 3 Zoom .....	22
5 - 3 - 4 Screen Control by using PTZ.....	23
5 - 4 System Information and Screen Setup Change .....	25
5 - 4 - 1 System Information .....	25
5 - 4 - 2 Screen Brightness/Contrast/Color/Saturation/Sharpen/Camera Adjustment .....	25
5 - 4 - 3 Display Setting.....	26
5 - 4 - 4 Screen Saver .....	26
5 - 5 Control.....	27
5 - 6 Search .....	27
5 - 6 - 1 Search Mode.....	27
5 - 6 - 2 Playback Menu .....	27
5 - 7 Calendar Search.....	28
5 - 7 - 1 Search Mode.....	28
5 - 7 - 2 Year/Month/Day Selection .....	28
5 - 7 - 3 Time Index.....	28

5-7-4	Event	28
5-7-5	Multi-Channel Search	28
5-7-6	List All	29
5-8	POS Search	29
5-8-1	POS Search Mode	29
5-8-2	Year/Month/Day/Text/Time Selection	29
5-8-3	Search / Playback	29
5-9	Playback	30
5-9-1	Playback and Playback Speed Control	30
5-9-2	Smart Search	31
5-9-3	POS Search	32
5-9-4	Calendar Search	32
5-9-5	MULTI CHANNEL	32
5-9-6	Event	32
5-9-7	Backup	32
5-9-8	Screen Mode	33
5-10	Log Viewer	33
5-10-1	Log Type	33
5-10-2	System Log Viewer	34
5-11	Recording	34
5-11-1	Recording Types	34
5-11-2	Recording Setup	34
5-11-3	Recording Status View	35
5-12	Backup	35
5-12-1	Backup in The Real-Time Monitoring Mode	35
5-12-2	Backup in Search Mode	35
5-12-3	Backup in Log Mode	35
5-12-4	Backup in Playback Mode	35
5-12-5	Common Backup Procedure	36
5-13	Setup Backup	37
5-14	Log Backup	37
5-15	Capture	38
<b>Chapter 6</b>	<b>Setup</b>	<b>39</b>
6-1	Time	39
6-1-1	Time Sync	40
6-1-2	Date and Time	40
6-1-3	Standard Time Zone	40
6-1-4	Auto Reboot	41
6-2	Camera	41
6-2-1	Camera	41
6-2-2	PTZ	42
6-2-3	POS	42
6-2-4	Event Source	42
6-3	Recording	43
6-3-1	Schedule Selection (Schedule1 ~ Schedule4)	43
6-3-2	Event	43
6-3-3	Recording	43
6-3-4	Alarm	44
6-3-5	Duration	44
6-3-6	Log	44
6-4	Schedule	44
6-4-1	Schedule Setup	45
6-5	Storage	45
6-5-1	Max. Recording Days	45
6-5-2	HDD Overwrite	45
6-5-3	Local Storage Management	46

6 - 6 Network.....	47
6 - 6 - 1 Ethernet.....	48
6 - 6 - 2 DDNS.....	48
6 - 6 - 3 Port.....	48
6 - 6 - 4 E-mail.....	49
6 - 6 - 5 Bandwidth.....	50
6 - 7 System.....	50
6 - 7 - 1 DVR Name.....	51
6 - 7 - 2 User Registration.....	51
6 - 7 - 3 Upgrade.....	51
6 - 7 - 4 Factory Setup.....	52
6 - 7 - 5 Error Alarm.....	52
6 - 7 - 6 Error Alarm Duration.....	52
6 - 7 - 7 Menu Time Out.....	52
6 - 7 - 8 Language.....	53
6 - 7 - 9 Video Loss Event Delay time.....	53
<b>A/P/I/E/N/D/I/X.....</b>	<b>54</b>
<b>Recommended PTZ Camera Protocol.....</b>	<b>54</b>



**Figure List**

[Figure 2-1. EH1-4 Basic Connection and Device Connection] .....	11
[Figure 4-11. Menu Window] .....	15
[Figure 5-12. Recording Status Window] .....	18
[Figure 5-13. Login Window].....	20
[Figure 5-16. 960H Model 4CH Channel Mode].....	20
[Figure 5-18. Zoom Control Screen] .....	22
[Figure 5-19. PTZ Setup].....	23
[Figure 5-20. PTZ Control] .....	24
[Figure 5-21. PTZ Control Mini/Full].....	24
[Figure 5-22. Product Information Window] .....	25
[Figure 5-23. Screen Setup Window] .....	25
[Figure 5-24. Display Setting Window] .....	26
[Figure 5-25. Display Setting Window] .....	26
[Figure 5-26. Audio] .....	27
[Figure 5-27. Text] .....	27
[Figure 5-29. Playback Menu] .....	27
[Figure 5-30. Search Window] .....	28
[Figure 5-31. Time Index] .....	29
<b>[Figure 5-32. POS Search] .....</b>	<b>29</b>
[Figure 5-33. Playback Screen] .....	30
[Figure 5-34. Playback Status and Control Window] .....	30

[Figure 5-35. Playback Menu] .....	31
[Figure 5-36. Smart Search Area Designation] .....	32
[Figure 5-37. Smart Search Motion Detection Window].....	32
[Figure 5-39. Display Mode] .....	33
[Figure 5-40. Log View].....	33
[Figure 5-41 . Move to the log list of the certain time zone in Log View] .....	34
[Figure 5-42. Backup Window] .....	36
[Figure 5-43. Backup and Sub-menu Setup Backup].....	37
[Figure 5-44. Setup Upgrade] .....	37
[Figure 5-45. Log Backup] .....	37
[Figure 6-46. Setup / Time Menu] .....	39
[Figure 6-47. Setup / Auto Reboot Menu].....	41
[Figure 6-48. Setup Camera Menu] .....	41
[Figure 6-49. Motion Area Setup].....	42
[Figure 6-50. Setup / Recording].....	43
[Figure 6-51. Schedule Window].....	44
[Figure 6-52. Storage Window (Local)].....	45
[Figure 6-53. Setup Network Window].....	47
[Figure 6-54. Network Port Window] .....	48
[Figure 6-55. Setup Network Ethernet Window] .....	49
[Figure 6-57. Setup Network E-Mail Window2] .....	49
[Figure 6-60. System Setup Window].....	50
[Figure 6-61. Firmware Upgrade Progressing Window].....	51

# Chapter 1 . Introduction

## 1 - 1 EH1-04 Major Features



Model Name		EH1-04
System	OS	Embedded Linux - Built in flash memory
	Access	Front button, Mouse, Remote Controller, Network, Key controller
	Hexaplex	Live monitoring, Recording, Playback, Backup, Network, Setup
	Upgrade	USB2.0 Memory stick, Network
Video	System	NTSC / PAL - Config switch
	Input	4 BNC
	Output	1 HDMI, 1 VGA, 1 BNC
	Loop	N/A
Audio	Input	1 RCA
	Output	HDMI, RCA
Video Recording	Compression	H.264
	Speed	960H real-time
	Resolution	★ 960H (960x480/576)
	Event	Motion
	Bit Rate	1 ~ 5Mbps/Ch, Adjustable
Audio Recording	Compression	G.711U
	Audio Sampling Rate	8KHz
Network	Interface	Ethernet 10/100/1G
	Compression	H.264
	Speed	Max. Q960H 8fps/ch
	Resolution	Max. 960H
Backup	Interface	USB2.0, Network
	Format	Video clip (Backup viewer), JPEG Still Image Log list, Setup data



Model Name		EH1-04
Alarm	Pre/Post-Alarm	5sec / 5sec~5min
	Alarm Action	E-mail, Channel Popup, Buzzer, Relay, PTZ Preset, Spot, Remote RMS, Front LED
Display	HDMI	★ Full HD, XGA
	VGA	Full HD, XGA
	TV	SDTV(720x480/576)
	Mode	4/1/SEQ - LIVE, 4/1 - P.B
External Interface	PTZ / Keyboard	★ RS485 - Terminal Block
	ATM / POS	Ethernet PoS
Storage	Primary	1 HDD
	External	N/A
Features	DDNS, DHCP, UPNP	Yes
	VMS, RMS	Windows
	Smart Phone (3G)	Android, iPhone, iPad
	Mac Viewer	★ Apple Mac OS
General	Power Supply	12V/2A
	Consumption	24 Watts
	Dimension	260 x45 x 240 mm

## 1 - 2 Components

After unpacking the product, check whether following accessories are included.

- Remote Controller
- CD (VMS, VMS Manual, User Manual)
- AAA 1.5V Batteries 2ea
- Quick Service Guide
- Rack Mount Handle (Only for Deluxe, Blue series)

## 1 - 3 Product Introduction

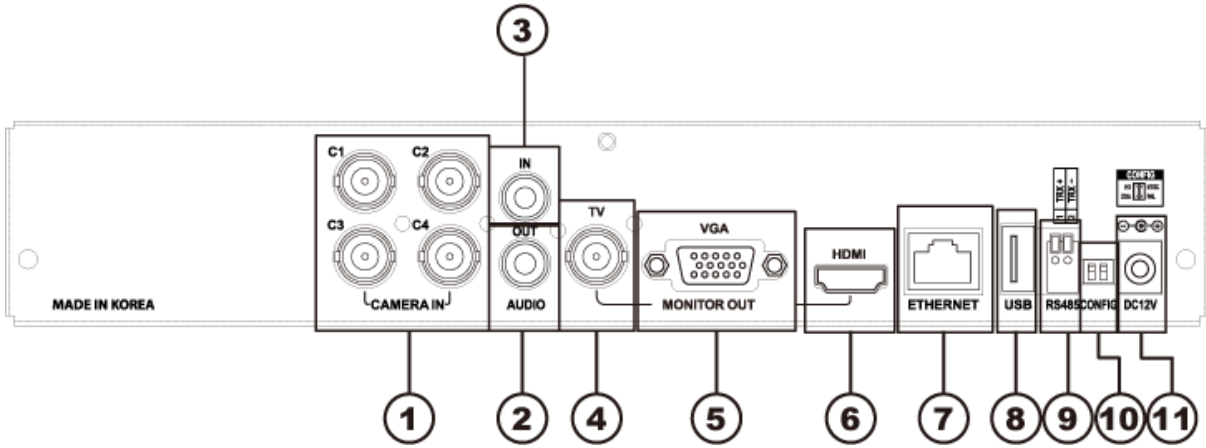


- 960H real-time recording
- 1Ch audio recording
- Various video output port (HDMI, VGA, BNC)
- Various video output mode (Full HD, XGA, SDTV)
- 1Ch POS/ATM interface
- Pre-alarm recording
- Auto e-mailing notification max. 5 users
- Privacy zone mask
- Covert channel
- Digital single/multi-zoom
- Smart search
- Text detection/search
- Multi-time/day, Index (event) search/playback
- Still image capture Full HD resolution
- Firmware upgrade at a remote PC site
- Remote setup, backup,
- Screen Saver
- USB/DVD backup with self-executable player (backup player)
- Web monitoring in PC (Built in web server)
- Smart Phone viewer (Android, iOS)
- Mobile web viewer (3G viewer)
- NTP, DST, DDNS, DHCP

# Chapter 2 . Installation and connection

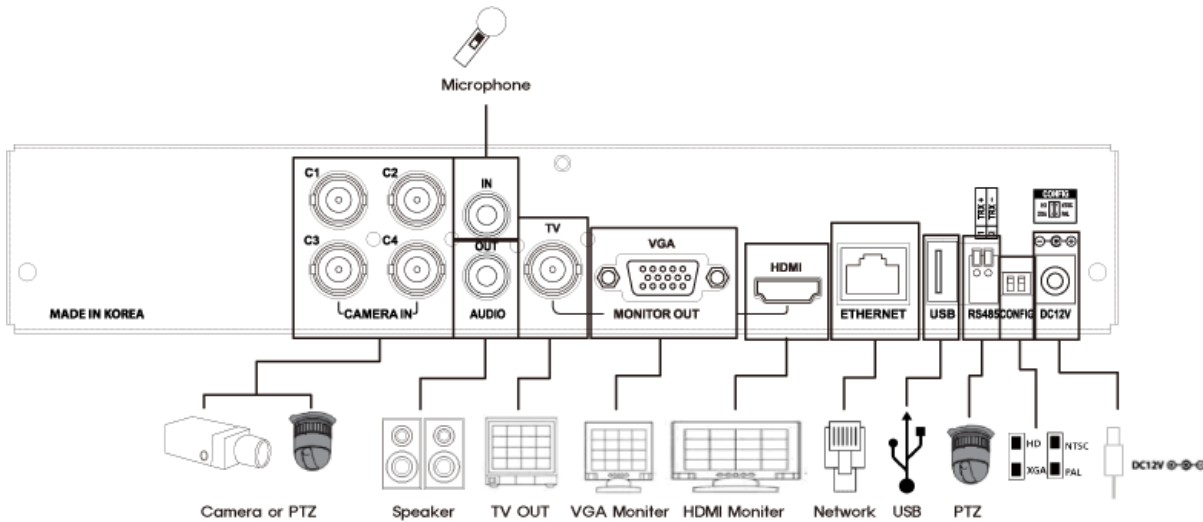
## 2-1 EH1-04 Names and Features of Each Part

### 2-1-1 EH1-04 Rear Panel



No.	Name	Feature	D
1	<b>CAMERA IN</b>	Video Camera Connection	BNC
2	<b>AUDIO OUT</b>	Audio Output Connection(Line Only Output)	RCA
3	<b>AUDIO IN</b>	Audio Input Connection	RCA
4	<b>TV</b>	CVBS Output	BNC
5	<b>VGA-OUT</b>	VGA Monitor or LCD Monitor Connection	D-SUB 15P
6	<b>HDMI</b>	HDMI Output	HDMI type-C
7	<b>Ethernet</b>	Cable Modem, Ethernet 10/100 Base-T, Network Connection	RJ-45
8	<b>USB</b>	USB 2.0	USB Type-A
9	<b>Terminal Block</b>	RS-485 / SENSOR IN / RELAY OUT / POS	Terminal Block
10	<b>CONFIG</b>	NTSC/PAL , HD / XGA	DIP S/W, 2-pin
11	<b>Power</b>	90 ~ 250V, 50/60Hz	DC Inlet

## 2-2 Installation and Connection



[Figure 2-1. EH1-4 Basic Connection and Device Connection]

### 2-2-1 Basic Connection


※ By referring to above [Figure 2-1], make a connection accordingly.

Connection Order	Connection Device	DVR Terminal
1	CCTV Camera	Rear Panel Video IN
2	CCTV Audio	Rear Panel Audio IN / OUT
2	CONFIG SWITCH Setup	Rear Panel Left 2ea Switch (Refer to below; CONFIG SWITCH Setup)
3	CCTV Monitor	Rear Panel TV / SPOT
4	VGA Monitor / LCD Monitor	Rear Panel VGA-OUT
5	HDMI Monitor	Rear Panel HDMI

#### ■ CONFIG SWITCH Setup

	Switch 1	Switch 2
1	HD	NTSC
2	XGA	PAL

### 2-3 Connection of Other Devices

 960H Series has different features as described below. Be cautious.

Item	EH1-04
Audio	1
Sensor	N/A
Relay	N/A
POS	1

Connect the PTZ controller cable, audio input/output, network, and sensors as shown below.

	Connecting Device	DVR Terminal
1	Mike / Speaker	Rear Panel Audio Input / Audio Output
2	LAN Cable	Rear Panel Ethernet
3	PTZ Camera	Rear Panel Terminal Block

### 1) Audio Input/Output

HD1-16CH supports 16ea audio inputs.

MH1-16CH supports 16ea audio inputs and MH1-08CH supports 8ea audio inputs.

SH1-04 supports 4ea audio inputs, SH1-08 supports 8ea audio inputs & SH1-16 supports 16ea audio inputs.

### 2) Terminal Block



[Figure 2-2. EH1-04 Terminal Block and Description]

The terminal blocks in the rear of the product are for the connection of PTZ / Sensor / Relay / POS Connection. The number of the terminal block may be different depending on the model.

#### ① PTZ Camera/Keyboard Controller

Connect PTZ control cable; TRX+, TRX- and GND to Terminal Block(TB1);No.4 TRXD+, No.5 TRXD- and No.10 GND in the rear of DVR. You may refer to APPENDIX for supported PTZ cameras in this manual. Keyboard controller has the same connection as PTZ camera.



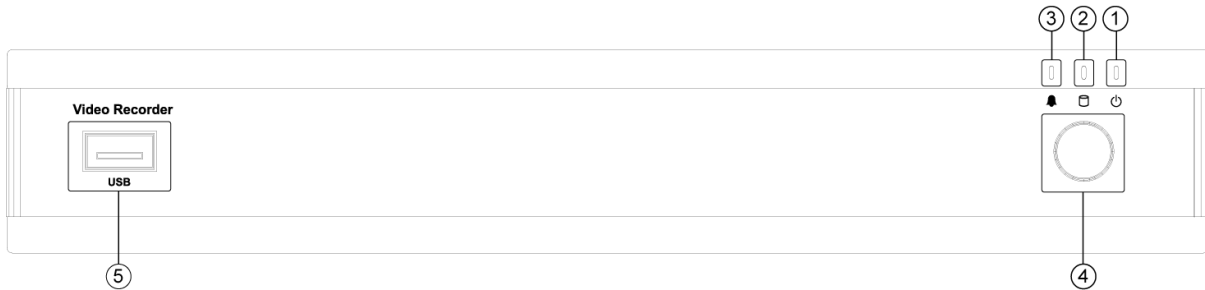
Caution

PTZ Camera may not be working properly if GND is not connected.

# Chapter 3 . Operation and Setup Tools

960H Series can be controlled easily by using the front panel buttons, front panel, remote controller, jogshuttle and mouse.

## 3 - 1 EH1-04 Front Panel Button



No.	Name	Function
1	<b>POWER LED</b>	Power LED On/Off
2	<b>RECORD LED</b>	Green LED turned on upon HDD operation
3	<b>ALARM LED</b>	Red LED turned on upon the occurrence of event or motion.
4	<b>IR Sensor</b>	Remote controller input sensor
5	<b>USB port</b>	Connection port to the USB mouse and USB memory stick

### 3 - 2 EH1-04 Remote Controller



	<b>POWER</b>	Turn the system power ON or OFF.
	<b>MODE</b>	
	<b>FULL</b>	1CH Mode
	<b>QUAD</b>	4CH Mode
	<b>9 SPLIT</b>	9CH Mode
	<b>16 SPLIT</b>	16CH Mode
	<b>SEQ.</b>	Sequence Mode ON/OFF

#### B) System Operation and Setup Button

	<b>MENU</b>	Data, Schedule, System Set up
	<b>ESC</b>	Exit the current menu or Move to the upper menu.
	<b>PREV</b>	Move back (Reverse)
	<b>PAUSE</b>	Pause
	<b>FORWARD</b>	Move forward
	<b>BACKWARD</b>	Playback
	<b>PLAY</b>	Play

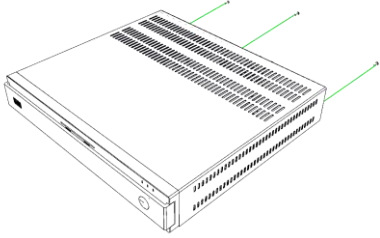



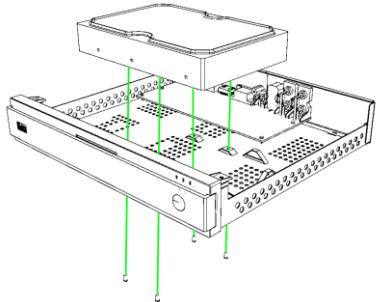
### 3 - 3 Mouse

The mouse pointer as shown below appears if a mouse is connected to the USB terminal at the front panel.

	Mouse Control functions are shown below.	
	<b>Click on the right button</b>	Monitoring Mode / Move from Play Mode to Monitoring Menu / Pop up or remove Play Menu. Show sub-folder of the certain Menu window.
	<b>Click on the left button</b>	Select Menu.
	<b>Double click on the left button</b>	Select Menu.
	<b>Click the left button and drag</b>	Move a certain window.

# Chapter 4 . DVR Operation Setup

## 4-1 Lite Series Storage Installation

	<p>1) Open the top case by using screw driver.</p> <table border="1"><tr><td data-bbox="619 504 730 674"> Caution</td><td data-bbox="730 504 1437 674"><p>1) Normal termination of the system and fully unplugged power code are required before conducting HDD installation.</p><p>2) Touch a grounded metal substance or ground yourself before installing HDD in order to reduce static electricity. Static electricity may cause a malfunction of the product.</p><p>3) After installing HDD, Do not connect to power supply with the top case opened. The top case must be covered before usage.</p></td></tr></table>	 Caution	<p>1) Normal termination of the system and fully unplugged power code are required before conducting HDD installation.</p> <p>2) Touch a grounded metal substance or ground yourself before installing HDD in order to reduce static electricity. Static electricity may cause a malfunction of the product.</p> <p>3) After installing HDD, Do not connect to power supply with the top case opened. The top case must be covered before usage.</p>
 Caution	<p>1) Normal termination of the system and fully unplugged power code are required before conducting HDD installation.</p> <p>2) Touch a grounded metal substance or ground yourself before installing HDD in order to reduce static electricity. Static electricity may cause a malfunction of the product.</p> <p>3) After installing HDD, Do not connect to power supply with the top case opened. The top case must be covered before usage.</p>		
	<p>2) Unscrew and separate the HDD bay from body. 3) Screw the additional HDD bay to current HDD bay 4) Connect HDD to HDD connector on the main board directly without cable. Reassemble the top case by reversing 1) to finalizing HDD installation.</p>		

## 4-2 Power ON.

- ① Check the Power, HD1-16 Model (90 ~ 250V, 50/60Hz) and connect the power.
- ② Once Power cable is connected (found in Rear Side), booting will be enabled. .
- ③ After booting is finished, the live screen and channel indication / clock are shown.
- ④ Menu window pops up by clicking the right button of the mouse or pressing [MENU] button in the front panel as shown below.



[Figure 4-2. Menu Window]

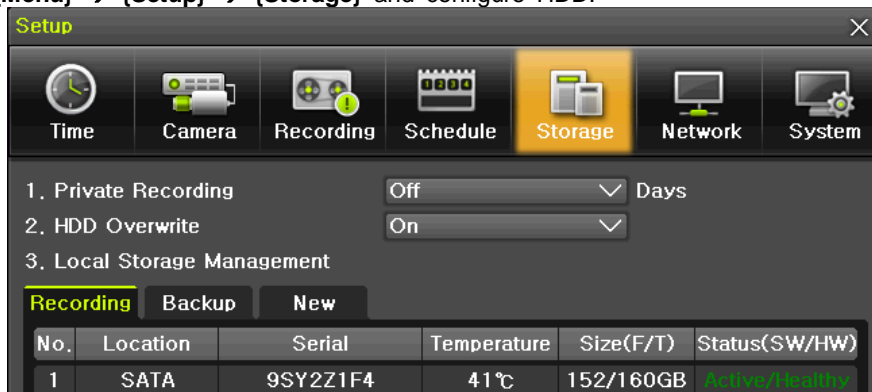


ID and Password are required for initial installation. Default ID and Password are shown below.  
[ admin : 00000 ] [ User1 : 1111111 ] [ User2 : 2222222 ]  
[ User3 : 3333333 ] [ User4 : 4444444 ]... [ User10 : aaaaaaa ] [ User11 : bbbbbbb ]...  
※ Password is available to change at {Menu} → {Setup} → {System} → {Modify}.



### 4-3 Storage Setup

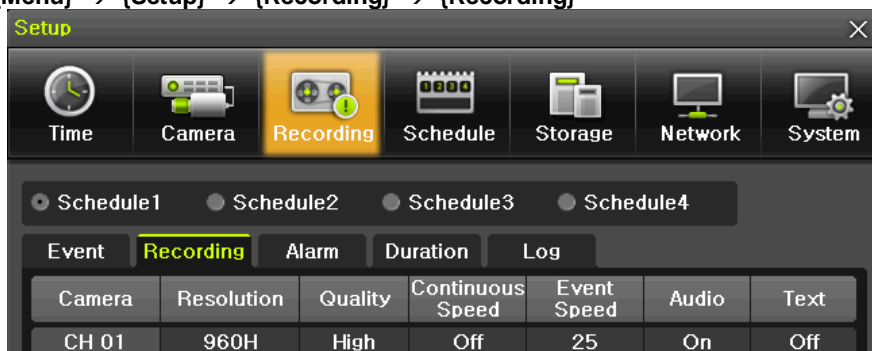
- ① Select {Menu} → {Setup} → {Storage} and configure HDD.



For more detail about HDD and external devices, check [6-5 Storage].

### 4-4 Recording Setup

- ① Select {Menu} → {Setup} → {Recording} → {Recording}



- ② Setup [Recording Resolution]/[Recording Quality]/[Continuous Speed]/ [Event Speed]/[Audio]/[Text].



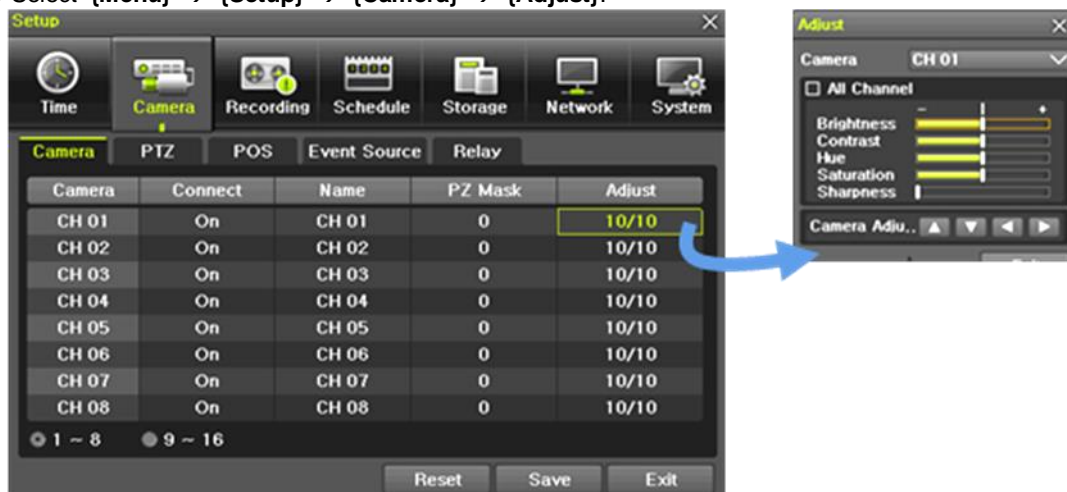
The initial recording setup is [Recording Resolution: 960H] [Recording Quality: High] [Continuous Speed: Off]. An image of the connected cameras is recorded with above setting. For more detail, check [6-3 Recording Setup].

### 4-5 Date/Time Setup

- ① Select {Menu} → {Setup} → {Time}.
- ② Configure [Time Server]/[Date and Time]/[Standard Time Zone].

#### 4-6 Camera / TV Setup

- ① Select {Menu} → {Setup} → {Camera} → {Adjust}.



- ② Set up for [Brightness/Contrast/Color/Hue/Camera Adjustment/TV OUT Adjustment] are available.

#### 4-7 Display Setting and Other Setup

- ① Select and set up {Menu} → {Miscellaneous} → {Display Setting}.

#### 4-8 External Device Setup

- ① Configure external devices. For more information, check [2-3 Connection of other devices], [Chapter 5. System Operation], [6-2 Definition], [6-6 Network], [6-7 System].

#### 4-9 Search

- ① For more information, check [5-6 Search], [5-7 Calendar Search], [5-8 Playback], [5-10 Recording].

#### 4-10 Backup

- ① Backup is available in Monitoring, Search, Log and Playback Mode.
- ② For more information, check [5-11 Backup].

#### 4-11 DVR Info.

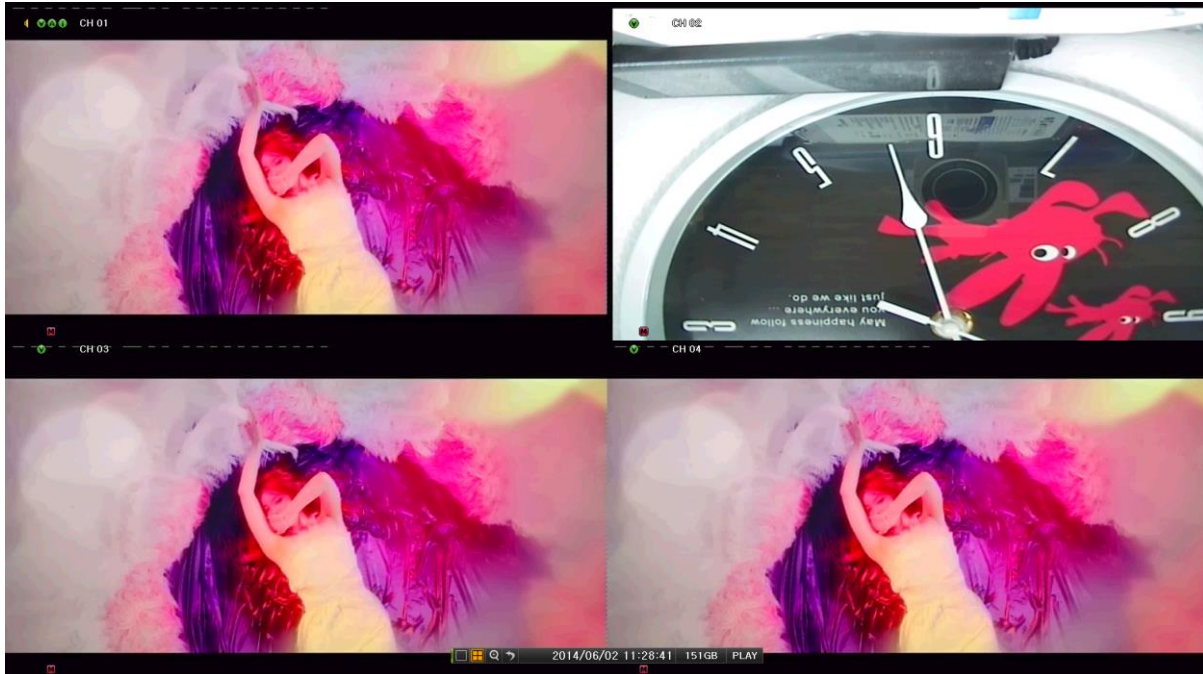
- ① Move to {Menu} → {Miscellaneous} → {DVR Info}.

 Caution	Detail information for product functions are described below in this manual.
--	--

# Chapter 5 . System Operation

## 5-1 Real Time Monitoring Mode and Icon

After booting is finished, Audio/Recording Status/Channel Title/Connection Status/Time/HDD Status are displayed as shown below.



[Figure 5-3. Recording Status Window]

※ Recording Event / Recording Mode Icon ※		
Recording Event		Motion Detection Recording
		Sensor Recording
		Audio Recording
		Text Recording
Recording Mode		Video Recording
		Audio Recording
		Text Recording

※ Recording Event Icons are still displayed despite of the recording stop. Recording Mode Icon distinguish recording status.

※ Live Screen Icon ※	
	Video is not connected
	Audio is activated.
	Audio is mute
No Signal	Camera has been disconnected.

※ Control Bar ※	
①	Full Screen
②	4 Channel Screen
③	ZOOM function
④	Auto Sequence Mode
⑤	Date / Time
⑥	HDD Status
⑦	Playback

## 5 - 2 System Login

### 5 - 2 - 1 User Account and Authorization

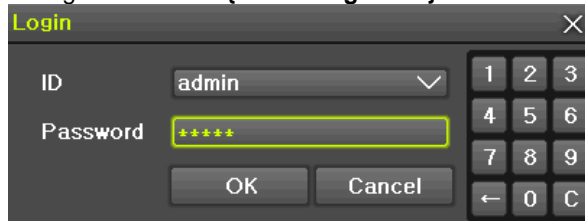
System users are divided into local administrators and general users and the local administrator can use all functions.

<b>Local Admin</b>	The local administrator can use all functions: System Power On/Off, Setup, Monitoring, and Playback .(remote access is not available, however)
<b>User</b>	Up to 15 users are allowed. Each user can access the functions depending on the given authorities. For Authorization Setup, Move to <b>{Menu} → {Setup} → {System} → {4. User Registration}</b> .

※ Functions available for Authorization Setup	
<b>Network Live</b>	View the real-time image by network access.
<b>Playback</b>	View the recorded image.
<b>Copy (Download)</b>	Copy and download the image from the network.
<b>PTZ Control</b>	PTZ camera control
<b>Setup</b>	Recording, Recording Schedule, System, Storage, Time, PTZ, Network Setup, Screen Setup
<b>Network Upgrade</b>	Remote network upgrade
<b>View Covert Channels</b>	Enable viewing covert channels.

### 5-2-2 Login

For security purpose, user must log in first to use {Monitoring Menu}.



[Figure 5-4. Login Window]

- ① On the real-time monitoring window, select {Menu} → {Login}.
- ② Enter the password or select cancel.

### 5-2-3 Logout

After logging out, the user cannot use {Menu}.

- ① On the real-time monitoring screen, select {Menu} → {Logout}.

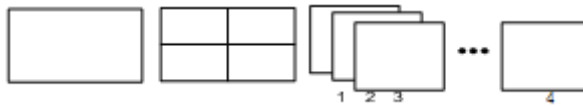
## 5-3 Monitoring

960H Model Series features powerful monitoring functions as shown below.

- 1 / 4 / 9 / 16 Division Mode and Auto Sequence Mode
- Channel Grouping
- 960H Model (4) Spot → 960H Model 1/4/9/16 Multi spot
- TV mode
- Menu Controlling in Monitoring Mode
- Zoom
- Live Event Indication
- Text Detection by using POS → Only 1ch
- Screen Control by using PTZ.

### 5-3-1 Screen Division and Auto Sequence

After the system is booted, images will be displayed on a screen divided into [16/9] division depending on the model. Except for the basic setting, the system follows user's setting on the screen division from next booting. H-model series provides the 7 screen division mode including 1 / 4 / 9 / 16 / Auto Sequence and 1/4/9/16 are Basic Mode.



[Figure 5-5. 960H Model 4CH Channel Mode]

※ In <b>Basic Mode</b> ;1/4/9/16, pressing the same mode button leads to screens as shown below.					
1 Channel Division Mode (16 Group)					
4 Channel Division Mode (4 Group)	<table border="1" style="display: inline-table;"> <tr> <td>1</td> <td>2</td> </tr> <tr> <td>3</td> <td>4</td> </tr> </table>	1	2	3	4
1	2				
3	4				

※ The user can view an image on full screen by double-clicking a desired channel in the 4/9/16 Sub-Screen mode. Double-click any part of the screen to return to the previous mode.

※ **Auto Sequence**

Auto Sequence is to rotate images at an interval of the certain time in 1/4/9 Basic Division. **Auto Sequence is not available in the Basic 16 Division mode.**

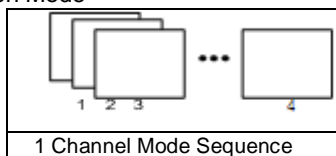
- ① Move to {Menu} → {Miscellaneous} → {Display Setup }.



- ② Pressing Front {SELECT} Button / Remote Controller {SELECT} Button / Mouse Arrow Button initiate the Auto Sequence mode.



- ③ Auto Sequence in Basic 1 Division Mode



**5-3-2 Menu in Monitoring Mode**

The user can control all functions available in Monitoring Mode in {Menu}.

- ① Press the Menu or right-click mouse button. The {Menu} will then appear.
- ② Select the desired item by using the arrow keys or mouse.
- ③ Press the ESC button or right-click mouse button to end the menu.

### 5-3-3 Zoom


Zoom is to zoom in or out the 1 channel division image in the real time monitoring mode.



- ① Move to {Menu} → {Zoom} or press the zoom icon from the control bar in the real time monitoring mode.
- ② After selecting a channel, it becomes the 1 channel mode and the zoom control screen shows at bottom-right.



[Figure 5-6. Zoom Control Screen]

- ③ In case of the mouse, move the pointer to an area to be zoomed in the zoom control screen and double-click on it.
- ④ Then, it zooms in 3 levels; Normal, x4, x16. Those 3 levels can be controlled by the wheel of the mouse. The user also can left-click and drag the yellow box to move the focused image in higher than the x4 mode.
- ⑤ In case of the remote controller and front panel, it is available to move to 3 levels by using  {SELECT} button in the remote controller and {SELECT} button of the front button. The yellow box can be moved by the arrow keys.

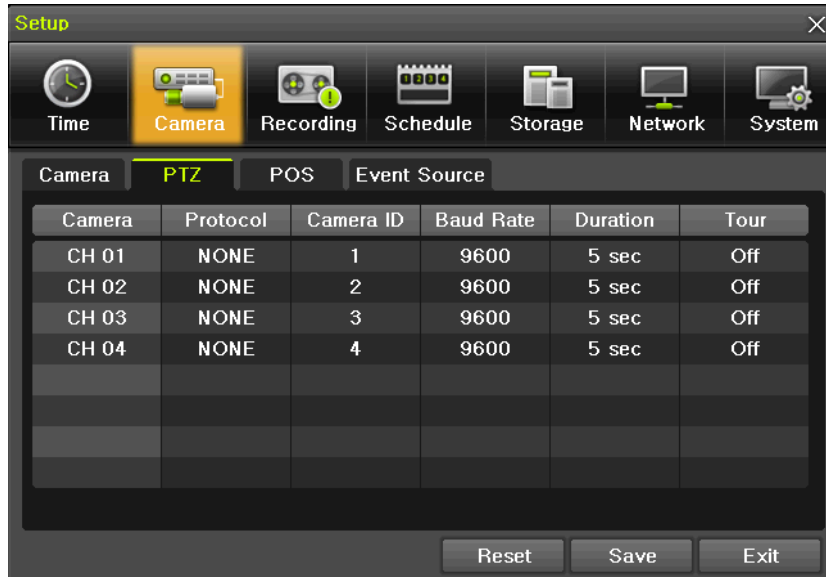


### 5-3-4 Screen Control by using PTZ

This enables the user the real-time monitoring by using PTZ camera.

The PTZ camera must be connected to the system. For external connection, refer to [2-3 Connection of Other Devices] → [3] Terminal block]. Select {Menu} → {Setup} → {Camera} → {PTZ}.

- ① Configure Protocol / ID / Baud Rate / Duration / Tour.



[Figure 5-7. PTZ Setup]

- ※ Baud rate can be selected at 2400/4800/9600/19200/38400.
- ※ Duration can be selected at 5/10/15/20/5-60(User setting) seconds.
- ※ Tour consists of Tour 1/ Tour 2 and each tour can be set with 8 Preset.



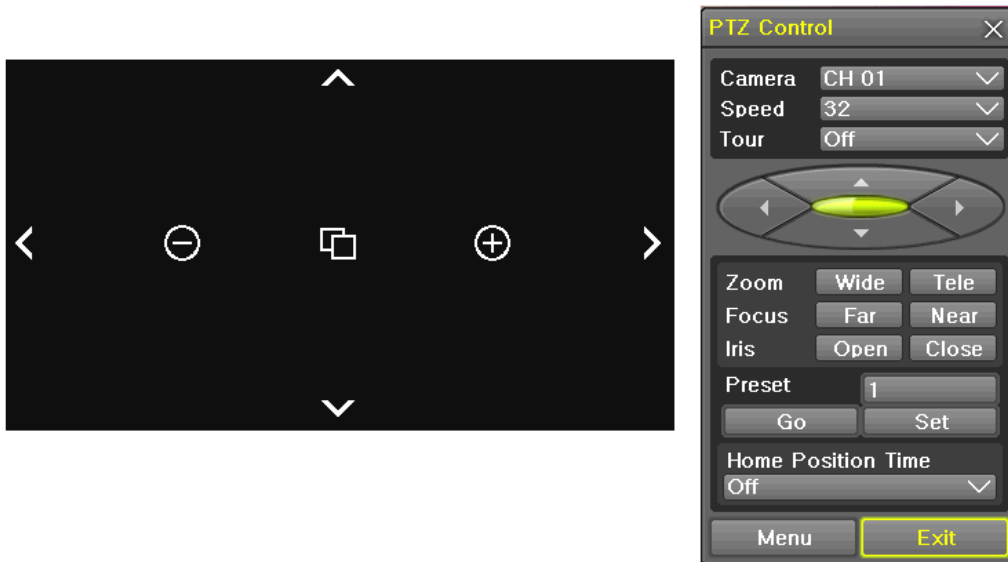
※ EH1-04 Model supports 26 protocols for PTZ control. For supported protocols, refer to APPENDIX.



② To control PTZ camera, select **{PTZ Control}** in Menu or press **{PTZ}** in the remote controller.



[Figure 5-8. PTZ Control]



[Figure 5-9. PTZ Control Mini/Full]



In the PTZ mode, there are two functions; Full and Mini. Tour has [Tour1] and [Tour2]. Home Position Time is 1/5/10/User setting(1-60)minutes.



Preset? Using horizontal/vertical/Zoom/Focus/Iris movement of PTZ Camera, zoom or focus or Iris a certain spot of the image by designating the coordinates and move to the designated coordinates quickly.



Home Position Time? If there are no controlling signals to PTZ camera after a certain time, it goes automatically to the Preset No.1 position as Preset No. 1 is designated as Home Position

## 5-4 System Information and Screen Setup Change

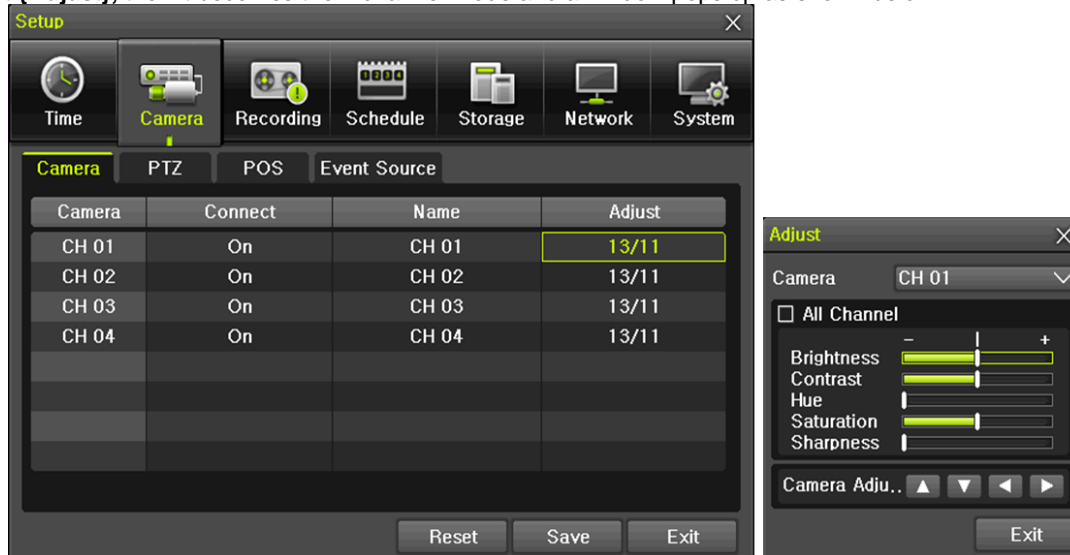
### 5-4-1 System Information



[Figure 5-10. Product Information Window]

### 5-4-2 Screen Brightness/Contrast/Color/Saturation/Sharpen/Camera Adjustment

Select **{Adjust}**, then it becomes the 1 channel mode and a window pops up as shown below.



[Figure 5-11. Screen Setup Window]



Moving the camera, down, right, or left excessively may cause black or gray areas to appear on the screen. The level at which such condition does not occur is the proper control range for the camera.

### 5-4-3 Display Setting

Camera Title On/Off, Control Bar On/Off, Button Sound On/Off, Border Line Draw/Width/Color, Sequence Duration 1-10seconds. After selecting Display Setting, it becomes the 1 channel mode and a menu pops up as shown below.



[Figure 5-12. Display Setting Window]

### 5-4-4 Screen Saver

Monitor connected with DVR can be shut down to protect monitor. {Menu} → {Miscellane..} → {Display Setting} → {Screen Saver}

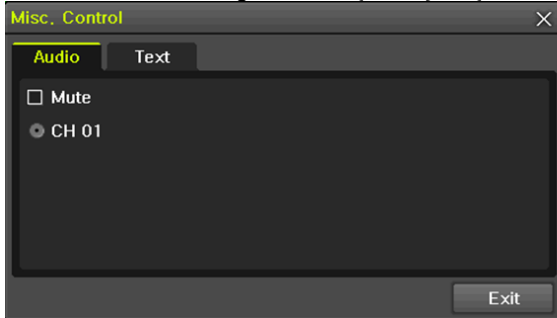
Name	Function
Duration	Screen Save duration setting
Starting	Screen Save starting setting, 0 to 24
Waiting Time	Screen Save activating term when there is no input



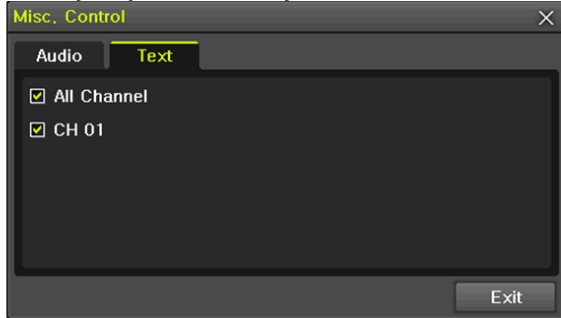
[Figure 5-13. Display Setting Window]

## 5 - 5 Control

In the real-time monitoring, move to {Menu} → {Miscellaneous} → {Misc. Control}.



[Figure 5-14. Audio]



[Figure 5-15. Text]

- ① Move to the Audio tab and select the channel to be activated or Mute.



EH1-04 support 1 channel audio.

- ② Move to the TEXT tab and select.



EH1-04 model support 1 channel text input.

## 5 - 6 Search

### 5 - 6 - 1 Search Mode

Move to {Menu} → {Search} in the real-time monitoring mode.



[Figure 5-16. Playback Menu]

### 5 - 6 - 2 Playback Menu

#### (1) Calendar Search

Calendar Search allows the user search and playback by [Year/Month/Day/Hour/Minute],[Multi-Channel/Multi-Time/Multi-Day]and [Motion/Sensor/Audio/Pattern].

#### (2) Go To The Last

The user can search and playback the last recorded data by Multi-Channel Mode.

#### (3) Go To The First

The user can search and playback the first recorded data by Multi-Channel Mode.

#### (4) Go to The Last Played Time

The user can playback from the last played time by Multi-Channel Mode.

#### (5) POS Search

Text Data can be searched and used for playback [Year/Month/Day/Hour/Minute],[Text 1~3]

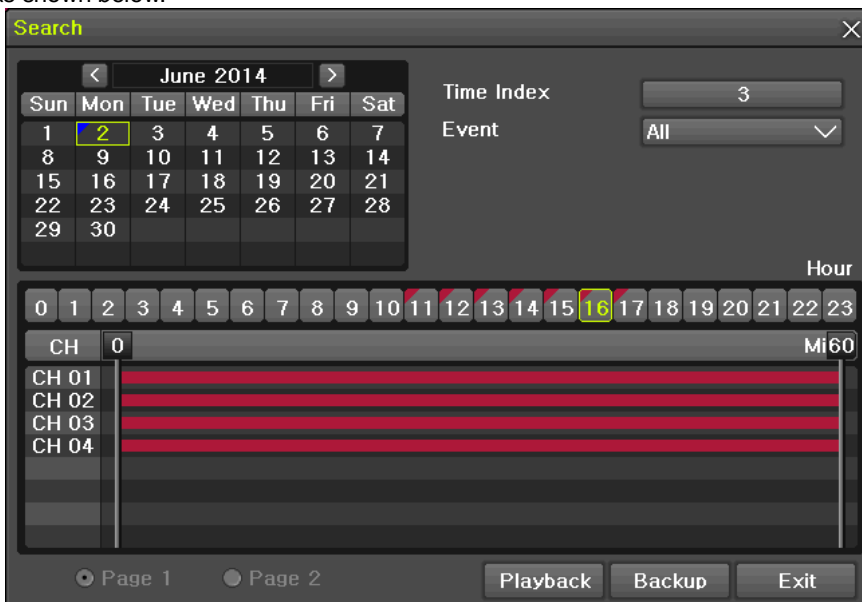


※ Go To The First and Go To The Last are only available in {Multi-Channel}.

## 5-7 Calendar Search

### 5-7-1 Search Mode

On the real-time monitoring screen, select {Menu} → {Search} → {Calendar Search} and then a searching window pops up as shown below.




[Figure 5-17. Search Window]

### 5-7-2 Year/Month/Day Selection

Select the desired [Year/Month/Day]. The color of the icon at the top-left of square in the calendar indicates the recording status.

### 5-7-3 Time Index

- ① Every time when the user changes the time at {Menu} → {Setup} → {Time} → {Date and Time} tab, a new folder(Index) is created and files saved in the folder before the time change can be found at {Menu} → {Calendar Search} → {Time Index}.
- ② Selecting a file at {Menu} → {Calendar Search} → {Time Index} leads to a selection window pop up and the user can select a file in different folders (before time change).

	
<b>Start Time</b>	The Recorded Start Time
<b>End Time</b>	The Recorded End Time


### 5-7-4 Event

Event is to search the data by the events. Select [All/Motion/Sensor/Audio/Pattern/Text].

### 5-7-5 Multi-Channel Search

The Multi-Channel Search is to play recorded images of the different channel over a certain designated time.

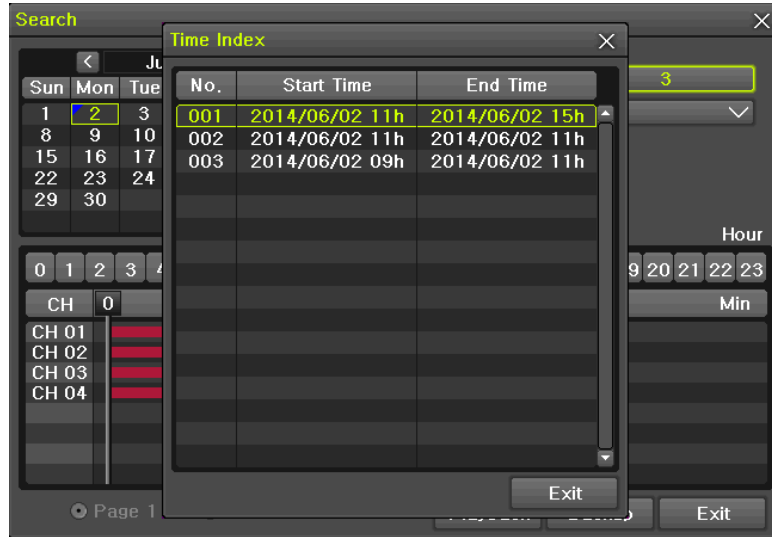
- ① Select the desired Year/Month in the calendar window.
- ② After selecting the desired search date, each channel is then displayed in the hour bar graph.

 The bar graph color in the real-time monitoring mode is same with recording event functionally.

- ③ Move the time line to a specific time point by using the arrow keys or the numeric buttons and press the Search button.
- ④ Selecting the time leads to the recorded video display of each channel in the minute bar graph.
- ⑤ Move the time line to a certain time point by using the arrow keys and the numeric buttons and press the Select button. Playback will then start from the specified time point.

### 5-7-6 List All

To check Time index in order of time line.



[Figure 5-18. Time Index]

### 5-8 POS Search

#### 5-8-1 POS Search Mode

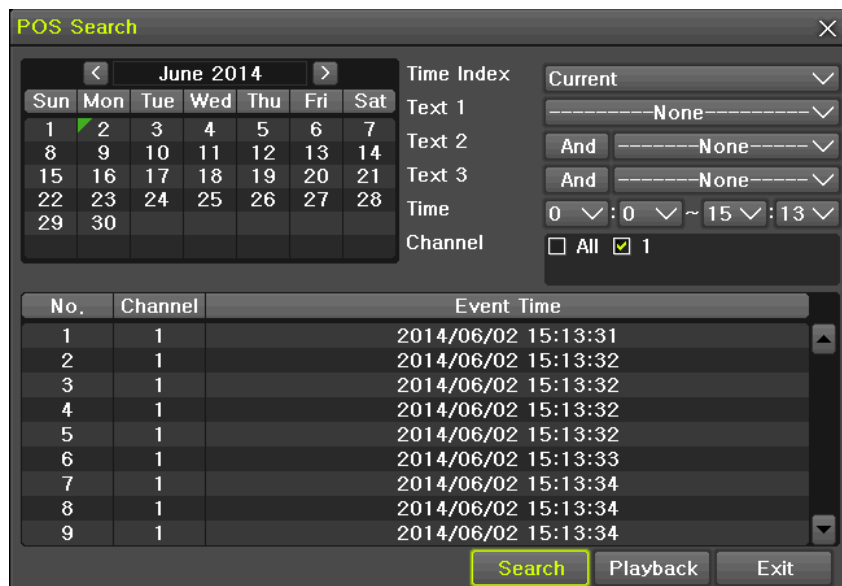
On the real-time monitoring screen, select {Menu} → {Search} → {POS Search} and then a searching window pops up as shown below.

#### 5-8-2 Year/Month/Day/Text/Time Selection

Please select date/time, Time index, Text 1~3, and select the start time within the channel..

#### 5-8-3 Search / Playback

After selecting the 'Start' Button, '1 searched item' needs to be selected in order for 'playback' to start.



[Figure 5-19. POS Search]

## 5-9 Playback





[Figure 5-20. Playback Screen]

- ※ There are five routes to play the recorded image.
  - Playback in the Calendar Search  
Select **{Playback}** in **{Menu}** → **{Search}** → **{Calendar Search}** → **{Search}**.
  - Playback in the Go To The Last  
Select **{Menu}** → **{Search}** → **{Go to The Last}**.
  - Playback in the Go To The First  
Select **{Menu}** → **{Search}** → **{Go To The First}**.
  - Playback in the Last Played Time  
Select **{Menu}** → **{Search}** → **{The Last Played Time}**.
  - Playback in the Log View  
After selecting **{Menu}** → **{Miscellaneous}** → **{Log Viewer}**, select or double-click the time line listed to play.

- ※ EH1-04 provide a variety of the playback.

- Smart Search
- POS Search
- Calendar Search
- Multi-Channel
- Panorama Play
- Event Play
- Zoom Play




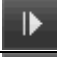
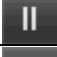




### 5-9-1 Playback and Playback Speed Control

- ① In the Playback mode, the user can play back video contents by using buttons as shown below.
- ② After the data is played to the end, the data of the next time zone will be automatically searched and played (this function is possible only in the Multi-channel Playback mode; both backward playback and forward playback are possible).
- ③ Pressing   buttons, the user can adjust the playback speed by (x 1) / (x 2) / (x 4) / (x 8) / (x 16) / (x 32) / (x 300).

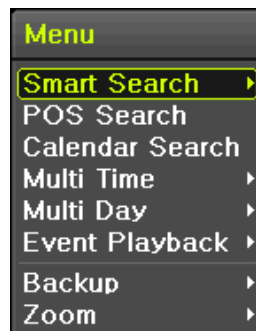


[Figure 5-21. Playback Status and Control Window]

Description of the Search Buttons

Button	Name	Features
	Channel Mode Change	Switch the channel mode.
	Zoom Mode	Switch to the Zoom mode.
	Forward Play / Fast Forward	Press one time - Playback forward ( x 1) Press two times - Fast forward ( x 2) Press three times - Fast forward ( x 4) Press four times - Fast forward ( x 8) Press five times - Fast forward ( x 16) Press six times - Fast forward ( x 32) Press seven times - Fast forward ( x 300) Pressing one more time in x300 leads to x1 back.
	Forward Frame by Frame	Playback frame-by-frame Pause
	Pause	Pause
	Reverse Frame by Frame	Reverse playback frame by frame Pause
	Reverse Play / Fast Reverse	Press one time - Playback reverse ( x 1) Press two times - Fast reverse ( x 2) Press three times - Fast reverse ( x 4) Press four times - Fast reverse ( x 8) Press five times - Fast reverse ( x 16) Press six times - Fast reverse ( x 32) Press seven times - Fast reverse ( x 300) Pressing one more time in x300 leads to x1 back.
	ESC	Exit out of Playback Mode.
		Status bar indicating information of the hourly recorded image data and the speed.

Selecting the right-mouse button or menu button in the Playback Mode pops up the **(Playback Menu)** as shown below.



[Figure 5-22. Playback Menu]

### 5-9-2 Smart Search

This function is used to search an image with the object movement at a specific zone quickly. Searching by each channel and a detail control are available.

Type	Content
<b>Sensitivity</b>	5 levels; Lowest / Low / Middle / High / Highest
<b>Minimum</b>	Mosaic pixel control available between 1- 10
<b>Quick Search</b>	In the NTSC mode, search 30 frames once. In the PAL mode, search 25 frames once.
<b>Detail Search</b>	Search all frames.



- ① Move to the Smart Search and select the desired channel.
- ② After shifting to the 1 channel mode, select areas to be smart searched.



[Figure 5-23. Smart Search Area Designation]

- ③ The 14 \* 15 pixel mosaic mode appears. In the beginning, all pixels are selected. Designate an area by left-click and drag the pixel mosaic pointer(deep yellow). Designate another area by repeating the same way.



It detects motions in non-designated blocks.

- ④ Right-click brings up the menu as shown below. Configure each category and press the Playback button to start searching.



[Figure 5-24. Smart Search Motion Detection Window]

- ⑤ It may take time during the searching. Start the playback after searching.

### 5-9-3 POS Search

The Text Data recorded needs to be searched in order to Playback

### 5-9-4 Calendar Search

Move to {Menu} → {Search} → {Calendar Search} and then a searching window pops up.

### 5-9-5 MULTI CHANNEL

Multi-Channel Search is to play recorded images of the different channel over a certain designated time.

### 5-9-6 Event

Event is to search and play events [ All/Motion/Sensor/Audio ].

### 5-9-7 Backup

The user can save the backup image data and capture the image into [CD/External Device].

<b>Backup</b>	Save the recorded data into [CD/External Device].
---------------	---

<b>Snapshot</b>	Capture and save the current displaying screen.
-----------------	---

**5-9-8 Screen Mode**

Screen division is available in the Playback mode as same in the Monitoring Mode. [1 / 4 / 9 / 16 Mode] can be selected.

- ① Select the screen division mode by using the mouse or arrow keys in the front panel and remote controller.



[Figure 5-25. Display Mode]

**5-10 Log Viewer**

DVR records all Log information over the system operation including Power on/off, System Setup and Network Access. Move to {Menu} → {Miscellaneous} → {Log Viewer} to see the logs.



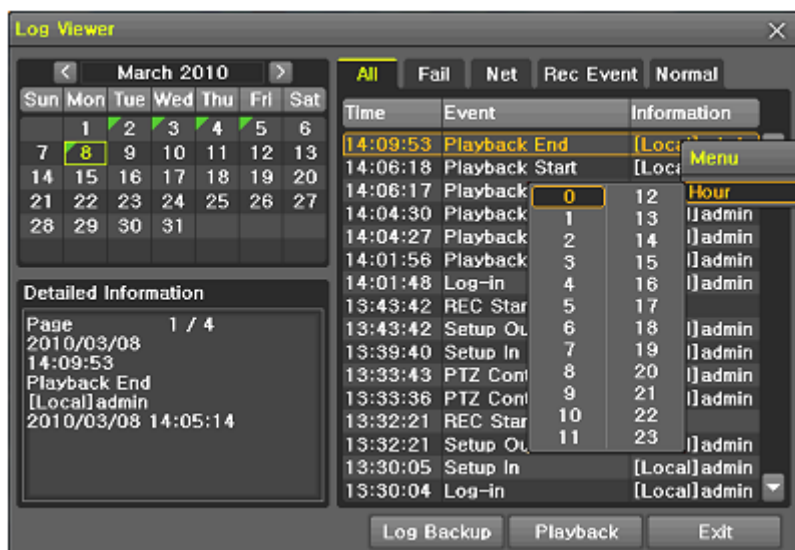
[Figure 5-26. Log View]

**5-10-1 Log Type**


<b>General</b>	Logs related to power ON/OFF, file copy/backup failure, setup start/end, playback, and other basic system operations
<b>Recording Event</b>	Logs related to the recording including motion detection and sensor detection, Audio detection
<b>Network</b>	Logs related to network operations including network login, network logout, and network live
<b>Fail</b>	Logs related to system operation failures including signal loss and network connection failure
<b>All</b>	Logs related to all system operations

### 5-1 0-2 System Log Viewer

- ① In the real-time monitoring mode, {Menu} → {Miscellaneous} → {Log Viewer}, then, Log List Window pops up.
- ② On the activated calendar window, select the desired date (year/month/day) by using the arrow keys and the Select button.
- ③ The user can check the time and the log type by using the arrow keys in the log list.
- ④ Use the Up/Down button to check the logs by time and type on each page.
- ⑤ The user can shift the focus to a certain time zone to play the certain time (playback will start from the time point when logs are saved)
- ⑥ Click the right-mouse button or select {Menu} button in the front panel and select {Hour} to move the desired log time zone.



[Figure 5-27 . Move to the log list of the certain time zone in Log View]

	<p><b>Time Changed Log Data View</b></p> <p>The stored data folder is created each time the user changes the time. A blue triangular icon is displayed at a date in the calendar window that time changes are made. Otherwise, a red triangular icon is displayed at an unchanged date. To view the log details, select the desired date with a red icon. Selecting a date with the blue icon causes the changed date list window to appear.</p>
---	--

### 5-1 1 Recording

#### 5-1 1-1 Recording Types

It supports various recording types as shown below.






Recording Type	Description
<b>Continuous</b>	The Continuous recording will be initiated based on the general frame rate.
<b>Motion</b>	When motion is detected, the recording will be initiated based on the event frame value.
<b>Text</b>	When a text is received from POS device, the text will be recorded.

#### 5-1 1-2 Recording Setup

Go to {Menu} → {Setup} → {Recording} for the Recording Setup. For more information, move to {Menu} → {Setup} → {Recording} → {Recording}.

### 5-1 1-3 Recording Status View

#### (1) Recording Status by Color

※ Recording Event / Recording Mode Icon ※		
Recording Event		Motion Detection Recording
		Text Recording
Recording Mode		Video Recording
		Audio Recording
		Text Recording

### 5-1 2 Backup

In order to backup the data, make sure to check that either internal or external storage devices (CD, DVD or HDD) supports USB 2.0 is connected. For supported external devices, refer to Appendix. The user can back up data in the real-time monitoring, search, log, or the playback mode.

#### 5-1 2-1 Backup in The Real-Time Monitoring Mode

- ① In the real-time monitoring mode, select **{Menu}** → **{Backup}** → **{Backup}**. The backup menus will then appear.
- ② The automatic backup time is set to 5 minutes before the Copy (Backup) button is pressed, and the end time, to the time the Copy (Backup) button is pressed.
- ③ All channels containing data at the time of backup are backed up automatically. Depending on the divided screen mode, however, only those channels that can be viewed may be selected.
- ④ For the remaining backup procedures, see **[5-33 Common Backup Procedure]**.

#### 5-1 2-2 Backup in Search Mode

- ① Select **{Menu}** → **{Search}** → **{Calendar Search}**.
- ② Click the right-mouse button or select **{MENU}** button in the front panel.
- ③ The automatic backup start time is set to the year/month/date/hour/minute set in the search mode, and the end time, to the last minute/second of the data existing at the selected time.
- ④ All channels with existing data at the time of backup are backed up automatically.
- ⑤ For the remaining backup procedures, see **[5-33 Common Backup Procedure]**.

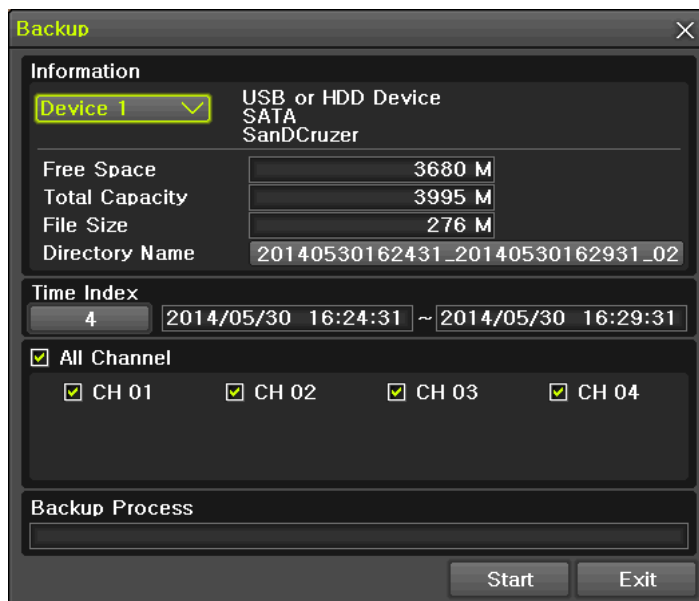
#### 5-1 2-3 Backup in Log Mode

- ① Select a date in **{Menu}** → **{Miscellaneous}** → **{Log Viewer}** and select a log related to the data to be backed up.
- ② Click the right-mouse button or select **{MENU}** button in the front panel.
- ③ The automatic backup time is set to 5 minutes before the selected log is generated, and the end time, to the time the selected log is generated.
- ④ All channels with existing data at the time of backup are backed up automatically. If a log has been generated for a specific channel, however, then only that channel is selected.
- ⑤ For the remaining backup procedures, see **[5-33 Common Backup Procedure]**.

#### 5-1 2-4 Backup in Playback Mode


- ① In the Playback mode, select **{Menu}** → **{Backup}**. Any playback in progress at this time will stop.
- ② The automatic backup time is set to 5 minutes before the Copy (Backup) button is pressed, and the end time, to the time the Copy (Backup) button is pressed.
- ③ All channels containing data at the time of backup are backed up automatically. Depending on the divided screen mode, however, only those channels that can be viewed may be selected.
- ④ For the remaining backup procedures, see **[5-33 Common Backup Procedure]**.

## 5-1 2-5 Common Backup Procedure



[Figure 5-28. Backup Window]

- ① [Figure 5-34] shows the initial backup window menus.
- ② A list of the devices that can be selected is outputted with simple information of the currently selected devices
- ③ Selecting a device by pressing the Select button causes the free space and total capacity for the selected device to be displayed.
- ④ Selecting a device causes the directory name based on the initial values for the time and channel to be displayed and the size of the file to be backed up to be calculated.
- ⑤ The directory is named as same with the backup time. The first 12 digits are determined by the year/month/day/hour/minute/second for From, and the 12 digits in the middle, by the year/month/day/hour/minute/second for To. The last 2 digits are determined by the number of folders in the selected device.
- ⑥ Selecting a device enables selecting the backup time as well. As a rule, the From time cannot be later than the To time, and the To time cannot be earlier than the From time.
- ⑦ To change the start and end time, press the Select button after choosing the start and end time. Change year/month/day/hour/minute/second by using arrow keys and press the ESC button.
- ⑧ Changing the backup time causes the name of the directory to be backed up to be changed as well.
- ⑨ If the file to be backed up exceeds the free space, its size is displayed in a yellow box in case the selected device is capable of rerecording and in a red box if not.

	If the backup storage device is not formatted, in case the box displaying the size of the file to be backed up is displayed in yellow, and if backup is executed by pressing the Copy (Backup) button, a prompt asking(Yes/No) whether to erase the device will appear. Selecting {YES} causes the storage medium for the selected device to be erased.
---	---

- ⑩ Press the Copy (Backup) button. A prompt asking(Yes/No) whether to proceed with the backup.



※ Select **[Yes]** to back up the data or **[No]** to stop the backup. Otherwise, press the **[Cancel]** button to return to the device selection mode on the backup window.

- ⑪ Select **{Yes}** to continue the backup.

### 5-1 3 Setup Backup

The Setup Backup is to back all setup values of the current menu up. This function enables the user to copy the setups and apply them into other devices.



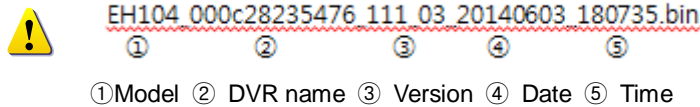
[Figure 5-29. Backup and Sub-menu Setup Backup]

- ① For the Setup Backup, a device for backup must be connected.
- ② Move to {Menu} → {Backup} → {Setup Backup} and a window shown below appears. The setup is copied by the name shown below.



[Figure 5-30. Setup Upgrade]

Saved as the name below.

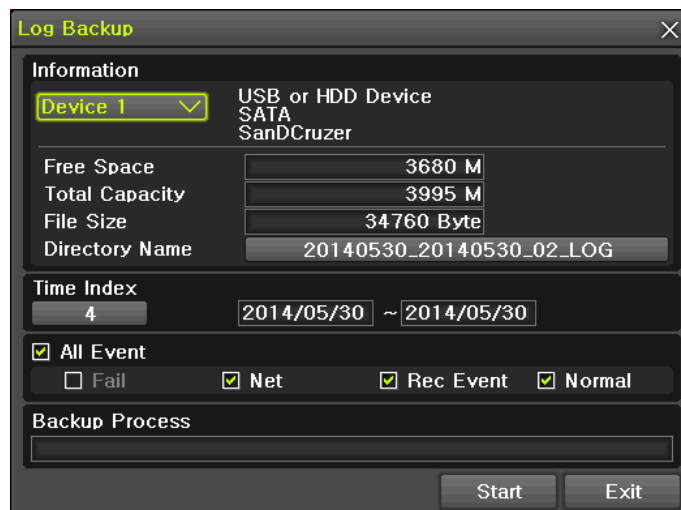


- ③ Move to {Menu} → {Setup} → {System} → {6. Upgrade} -> {Setup} after insert the backup device.
- ④ With this way, the user can upgrade a new device with the current setup values in easy way.

### 5-1 4 Log Backup

This is to back logs up including General/ Recording Event / Network / Fail.

- ① Move to {Menu} → {Backup} → {Log backup} and start the backup process after selection of the events.



[Figure 5-31. Log Backup]



.Log files are created at a folder shown below.

 20100303\_20100303\_02\_LOG

565645348945\_20100303.log

.log file is the text file.

---

### 5-1 5 Capture

The Capture function lets the user create a JPG file in the real-time monitoring, playback, search, or log mode and back up the image data.

- ① To back up the currently displayed image, select **{Menu} → {Backup} → {Capture}** in real-time monitoring, Playback and Log mode.
- ② When only one USB2.0 backup device (excluding ODD devices) is searched, the JPG file is stored in the same device.
- ③ If there are no or more than two USB2.0 storage devices (excluding ODD devices), a window for selecting the device will be displayed.
- ④ If the selected device is an ODD device, a prompt asking whether to back up in the ODD device.



# Chapter 6 . Setup

## 6-1 Time

### ※ Function Description

#### 1. Time Synchronization

##### 1) Synchronization with the NTP server

The time is synchronized once every hour with the NTP Server.

##### A. Automatic Setup

The nearest server from the user's zone will be selected for connection. If the connection fails, the next nearest server will be chosen.

##### B. User Setting

The user sets the URL or IP for the NTP server. If connection is not established, a message will be sent to the user, and the related log, saved.

If synchronization with the NTP server fails, synchronization with RTC will be established.

##### 2) Synchronization with the DVR Time Server

The DTS server is executed in the **DVR system** and the time is synchronized every hour. DTS clients of DVR series referring to the DTS synchronize the time of the DVR system with DTS.

When the DTS time or a zone is changed, the change is reflected on DVR series belonging to the network (the synchronization signals are broadcasted without passing through the router or gateway). The DVR time server does not support automatic connection.

#### 2. Daylight Saving Time (DST) Setup

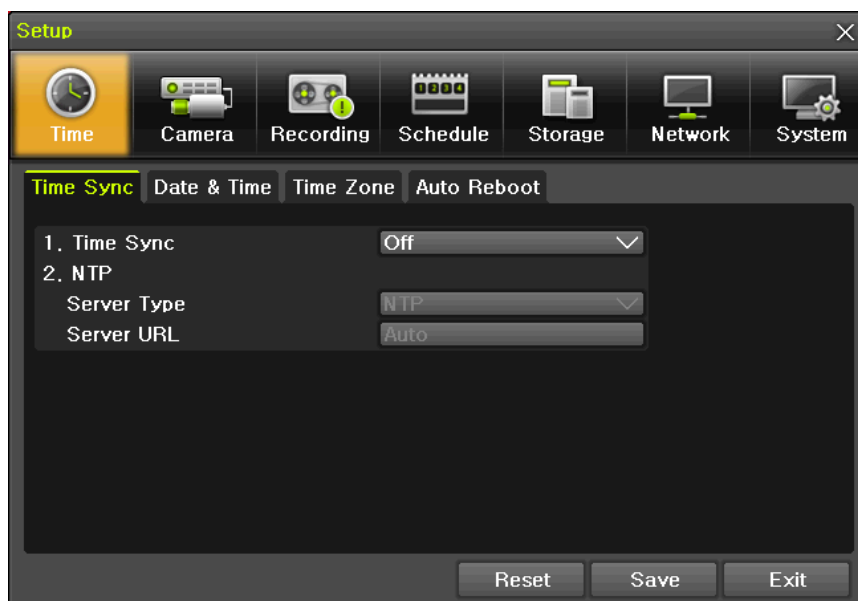
Regardless of whether NTP server or DST server is referred to, DST is automatically processed according to the time.

#### 3. Time Setup by User

The user can set the time directly.

For the NTP client setup, the user can read the time but not change it.

※ Move to {Menu} → {Setup} → {Time} to set up time functions.



[Figure 6-32. Setup / Time Menu]



### 6-1-1 Time Sync

- ① Select Time Sever / Sever Type / Sever URL.

Off	The time server is not used.
NTP	NTP is used to set the time for the time DVR.



{NTP} setup is available when {Time Sync} is set as NTP.

The user can enter the IP only when the server type is DVR. For the NTP server, Automatic, IP, or URL should be selected.

### 6-1-2 Date and Time

#### (1) Date and Time



Only available when Time Server is off.

The system date and time format is Year/Month/Day Hour/Minute/Second.

- ① By using the arrow keys and the Select button, move the focus onto the desired field; Year/Month/Day Hour/Minute/Second and press the Select button.
- ② Select a field you want to change by using the arrow buttons and press the Select button.

#### (2)Time Display Format

Select Time Display Format among [Day/Month/Year] / [Month/Day/Year] / [Year/Month/Day].

### 6-1-3 Standard Time Zone

#### (1) Standard Time Zone

- ① Select {Standard Time Zone}.
- ② On the selection window, select the standard time zone you want to set.

#### (2) DST

- ① By using the arrow keys and the Select button, select {Summer Time}.
- ② On the selection window, select On/Off by using the arrow keys and the Select button.

#### (3) Start Time

- ① By using the arrow keys and the Select button, select {Start Time}.
- ② On the selection window, set up Start Time by using the arrow keys and the Select button.

#### (4) End Time

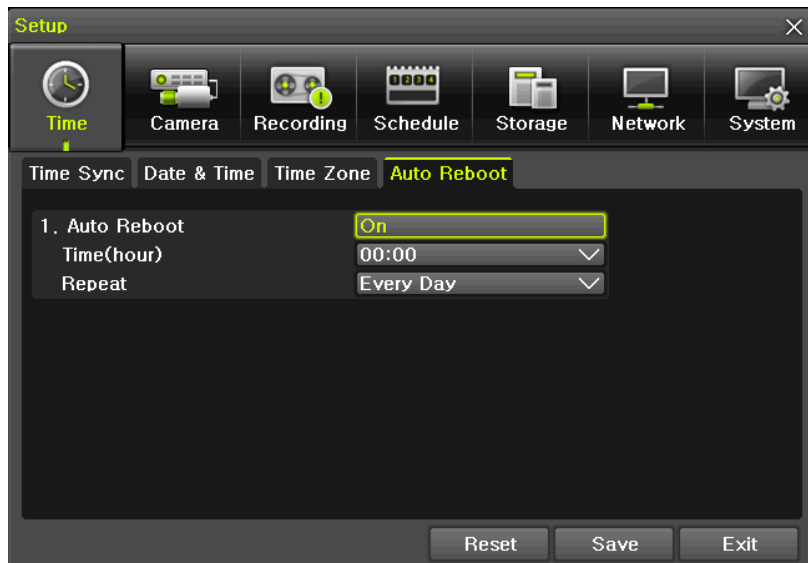
- ① By using the arrow keys and the Select button, select {End Time}.
- ② On the selection window, set up End Time by using the arrow keys and the Select button.



- ※ For a weekly setting in the {Start Time} and {End Time} fields, set Day to 0.
- ※ After the Daylight Saving Time is selected, the existing data will be displayed as "OLD\_" in the search and log list.

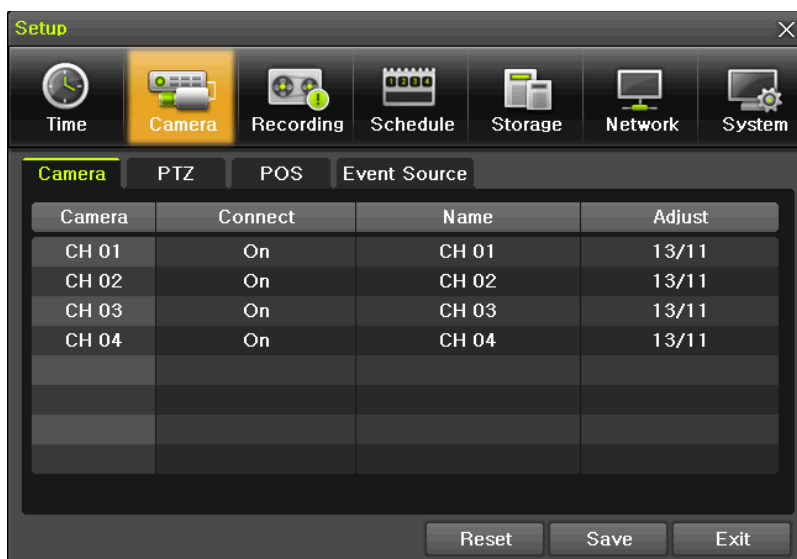
### 6-1-4 Auto Reboot

Auto Reboot is for system stability, rebooting itself regularly.



[Figure 6-33. Setup / Auto Reboot Menu]

### 6-2 Camera



[Figure 6-34. Setup Camera Menu]

#### 6-2-1 Camera

##### ① Connection

Used to set whether to connect or disconnect each camera channel.



※ When the camera channel is set to disconnected, the video contents will not be displayed even if the camera is actually connected.

##### ② Title

Name each camera. Max. 20 letters are available.

##### ③ PZ Mask

Used to hide a certain area of the real-time monitoring screen. After selecting PZ Mask over each channel, it becomes the 1 channel division mode and designate sections where you don't want to monitor.

④ Adjust

Adjust Brightness/Contrast/Color/Saturation/Sharpen/Camera.

**6-2-2 PTZ**

Setup the protocol and baud rate of the PTZ Camera.

**6-2-3 POS**

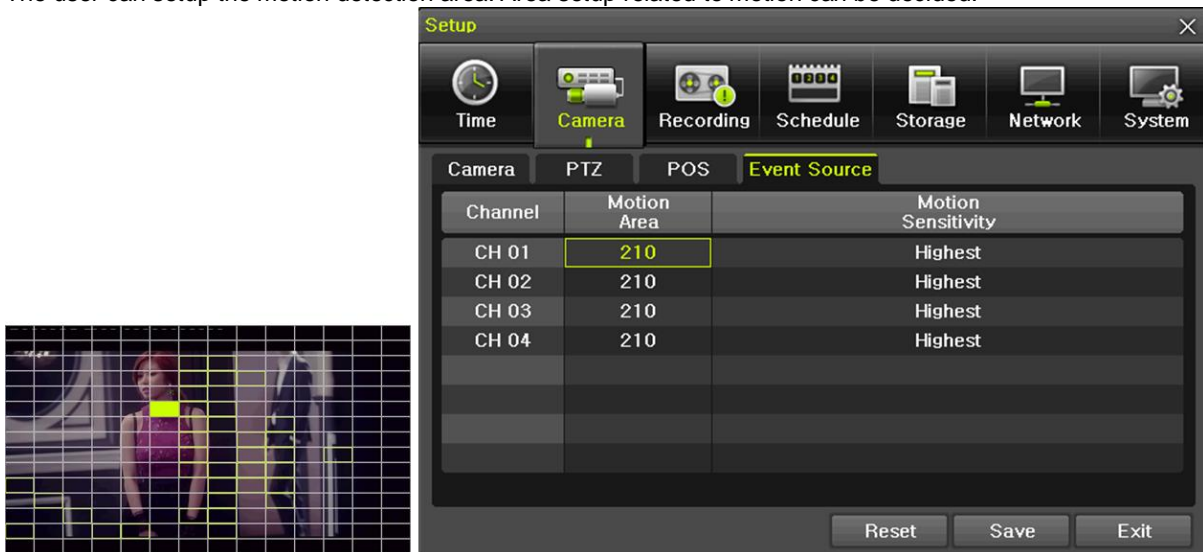
Setup the protocol and baud rate of the POS device.

**6-2-4 Event Source**

Select {Menu} → {Setup} → {Camera} → {Event Source}.

**(1) Motion Area**

The user can setup the motion detection area. Area setup related to motion can be decided.



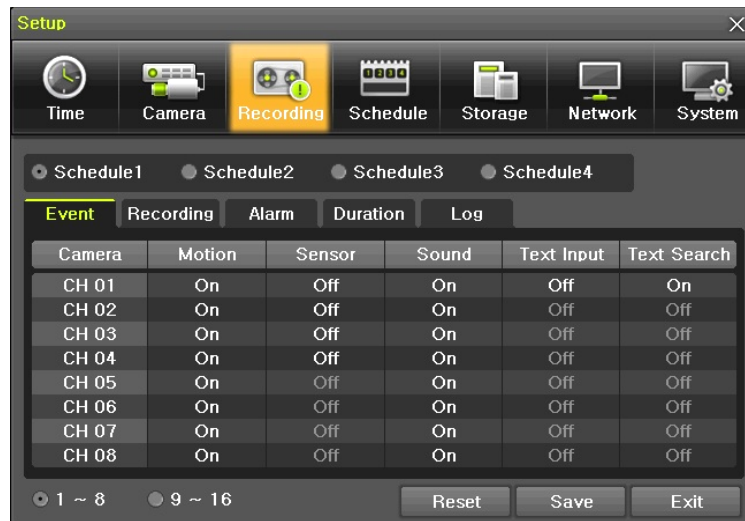
[Figure 6-35. Motion Area Setup]

- ① Select Motion Area of each channel.
- ② It becomes the 1 channel division mode and rectangular boxes appear where motions occur. Drag the yellow pixel cursor by using the mouse or the front button/remote controller and select pixels where motion detection doesn't apply. The selected area turns brown.
- ③ Select Exit to finish.

**(2) Motion Sensitivity : Lowest/Low/Middle/High/Highest.**

### 6-3 Recording

The Main setup is to configure the environment of record and system and major functions. In the real-time monitoring, move to {Menu} → {Setup} → {Recording}



[Figure 6-36. Setup / Recording]

#### 6-3-1 Schedule Selection (Schedule1 ~ Schedule4)

- ① Each channel can be scheduled in 4 different schedules. This schedule can be set as the recording schedule and each time can be 4 different schedules.

#### 6-3-2 Event

This is to set the events On/Off of Motion / Sensor / Sound / Text Input / Text Search.

Recording Type	Description
<b>Continuous</b>	Continuous recording based on the Normal Speed frame rate.
<b>Motion</b>	When motion is detected, recording will be initiated based on the event frame rate.
<b>Sensor</b>	When input signal from an external sensor is generated, recording will be initiated based on the event frame value.
<b>Sound</b>	When audio is detected, recording will be initiated based on the event frame value.
<b>Text Input</b>	When a text is received from POS device, recording will be initiated based on the event frame value.
<b>Text Search</b>	When searching Text, can select to receive email regarding the 'Word' that is set..

#### 6-3-3 Recording

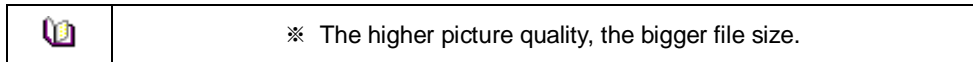
##### (1) Recording Resolution

Used to set the resolution of the recorded channel.

Type Resolution	Resolution by Video Type	
	NTSC	PAL
<b>CIF</b>	352 × 240	352 × 288
<b>D1</b>	704 × 480	704 × 576
<b>960H</b>	960 × 480	960 × 576

## (2)Recording Quality

Used to set the quality of the recorded video. Select among five levels {Lowest} / {Low} / {Middle} / {High} / {Highest}.



## (3) Frame Rate

If the user configures Normal Speed and Event Speed at the same time, the continuous recording follows Normal Speed frame rate and the event recording follows Event Speed frame rate.

<b>Normal Speed</b>	Set the recording frame rate for Continuous recording.
<b>Event Speed</b>	Set the recording frame rate for Motion, Sensor, Audio, Text

Resolution		Maximum Recording Frame by Resolution		
		CIF (NTSC/PAL)	D1 (NTSC/PAL)	960H (NTSC/PAL)
Model				
4CH		120/100fps	120/100fps	120/100fps

## (4) Audio

Used to set the recording of the external audio input linked to the system.

### 6-3-4 Alarm

※ This function is used to generate alarms through the Buzzer / PTZ Preset / e-mail / Relay / Spot / Popup in case of an event. PTZ preset can be configured between 1-16.



※ Popup function is to inform event occurrence to the user through a warning window in the real-time monitoring mode.

### 6-3-5 Duration

Setup Pre-Recording( On / OFF ), Post-Recording(5 / 10 / 15 / 20 / 60 / 150 / 300 seconds).

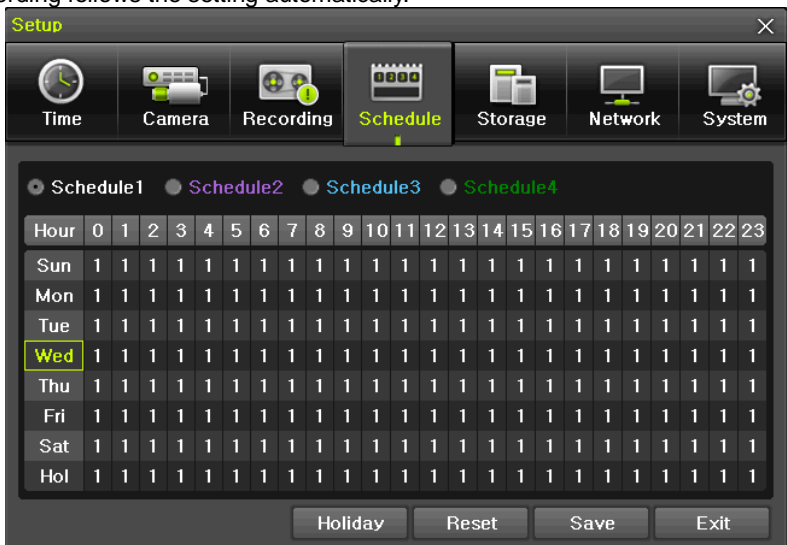
※ in Pre-Recording, images of the last 7 seconds before the event occurrence are recorded.

### 6-3-6 Log

Setup On / Off for Motion / Sensor / Sound / Text Input.

## 6-4 Schedule

H-model series provide 4 different recording mode configurations. Each schedule mode can be set one week/24 hours and the recording follows the setting automatically.



[Figure 6-37. Schedule Window]

### 6-4-1 Schedule Setup

Select one schedule among Schedule1, Schedule2, Schedule3 and Schedule4.


#### (1) Selection Tip

- ① Select the day and time to be set by using the arrow keys.
- ② Select after moving the cursor onto Time(0-23) or Day(Sun. – Holiday) then the user can configure the whole line at once.
- ③ Using the mouse can be easier.

#### (2) Holiday Registration

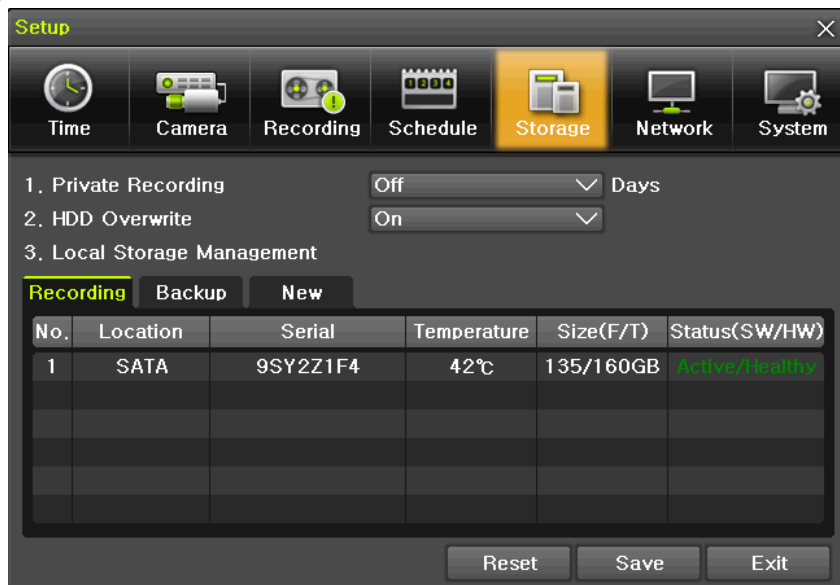
This feature is used to enable the user to set the holidays and schedule independently.

- ① Move to **{Schedule} → {Holiday}**.


	<ul style="list-style-type: none"> <li>※ If the date for the holiday and day of the week are the same in the <b>{Schedule}</b> menu, the holiday setup will have priority over the date setup.</li> <li>※ Designated holidays are marked with a red tag.</li> </ul>
---	---

- ② On the Holiday Registration Window, select the date by using the arrow keys and the Select button and press the Select button.
- ③ After setting the holiday, move to **{Save}** at the bottom of the menu. Afterward, press the Select button.

## 6-5 Storage



[Figure 6-38. Storage Window (Local)]

	<p>In the Storage menu, To apply the new setting, save the new setting after changing the setting.  <b>Reset:</b> Initialize the menu to the basic setting.</p>
---	---

### 6-5-1 Max. Recording Days

This is to limit the recording days. You can set None/1day/7days/30days/User setting(1-31).

### 6-5-2 HDD Overwrite

- ① Select On/Off for HDD Overwrite.

<b>On</b>	If there is no more hard disk space left, the existing files will be overwritten by starting with the oldest.
<b>Off</b>	If there is no more hard disk space left, the further recording will not be executed.

### 6-5-3 Local Storage Management


#### (1) Local Storage Management Function

Local Storage refers to the internal hard disk and storages connected to the system via USB. Local Storage is classified and managed as **{Recording}**, **{Backup}**, **{New}**, **{iSCSI}** and functions are described below.

##### ① Recording

The Recording storage is managed in Direct. The Recording storage stores data on the hard disk in the real time. Five commands can be executed. Depending on the S/W status, however, some commands cannot be executed.

<b>New</b>	Returns the status of the selected storage device to New; if this command is executed, the selected storage device will be moved to the <b>{New}</b> storage device manager.
------------	--

	※ Physical states supporting the execution of the commands above includes Healthy and Warning. In fault state, however, no command can be executed.
---	---

##### ② Backup

The backup storage is managed in Backup. Backup storages are not used to store data; rather, they are only used to back up the data. The user can execute only the **{New}** command.



Depending on the storage type, the storage is used only for (Recording) or (Backup) purposes.

##### ③ New


All storages, initially detected are managed in **{New}**. All initially detected storages are displayed as New and can be changed into Recording storage or Backup Storage.


<b>Recording-Format</b>	Changes the selected storage into a dedicated recording storage.
<b>Backup-Format</b>	Changes the selected storage into a backup storage.



In **{New}**, At least, one storage shall be selected as a dedicated storage. Otherwise, the data cannot be stored in the real time.

#### (2) Composition of the local storage device

	※ There are three software status types.
<b>Active</b>	Connected to storage or backup device; currently saving the data.
<b>Online</b>	Only connected to storage or backup device.
<b>Offline</b>	Not connected to storage or backup device.

	※ There are three hardware status types.
<b>Healthy</b>	Connected to storage or backup device; functions normally.
<b>Warning</b>	Connected to storage or backup device, but error was detected; in this case, data storing or backup cannot be made (for more information, see the description below).
<b>Fault</b>	Not connected to storage or backup device; cannot perform data saving or backup.

1. **Fault State** : The storage device is completely damaged, and none of the S/W operations can be performed. The fault state is not related to a DVR problem. The DVR has detected the fault and stopped the recording.



2. **Warning State** : The storage device has a physical error that can be corrected by the storage device or by the DVR. If the error is not taken care of, however, the storage device is likely to be damaged (and shift to fault state). Backing up data in the corresponding storage device and replacing the device with a normal one are strongly recommended.

3. If there is an active storage device with a warning or a fault, a message is displayed on the upper left part of the screen.

### (3) Instruction when adding the local storage device

- ① Open the system body and install a new disk (connect the data cable and the power cable)
- ② Connect power to the system and boot the system.
- ③ Select **{Menu}** → **{Setup}** → **{Storage}** by using the arrow keys and the Select button.
- ④ A newly displayed disk will then be displayed as **{New}**.
- ⑤ Select a newly installed disk by using the arrow keys and the Select button and initialize the disk as a **{Recording}** or a **{Backup}** disk. The following describes the method of setting the recording storage.
- ⑥ **{Recording}** shows the status of the newly installed disk online.



- ※ Selecting **{Recording-Format}** or **{Backup-Format}** causes all data in the device to be erased. Therefore, caution is required.
- ※ While **{Recording-Format}** or **{Backup-Format}** is being set up, do not remove the device (may cause an error when detecting the device).
- ※ To use the external or portable storage device for system upgrade, set to **{Backup-Init}** in the **{New}** item for **{Main Setup}** **{Storage Device}** **{Local Storage Device Management}**.
- ※ When used in DVR equipment for the first time, a backup USB device will always be detected in the **{New}** category. Therefore, a USB device in the **{New}** category must be set up as **{Backup-Format}** prior to use for backup. A USB device that has gone through this procedure will be detected in the **{Backup}** category when used again in the DVR equipment.

### (1) How to changed FAULT HDD

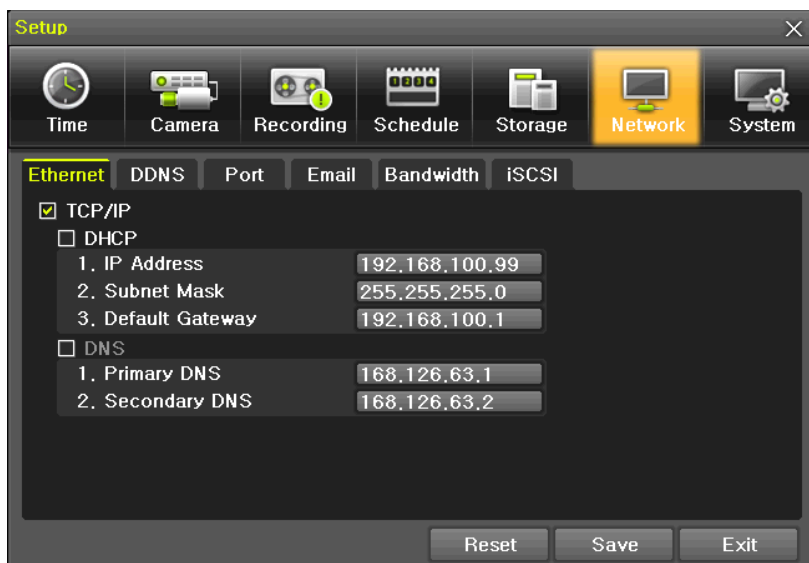
- ① Check Faulty HDD number
- ② Turn OFF unit by power button.
- ③ Detach cover of DVR
- ④ Find the faulty HDD by number printed on mainboard
- ⑤ Detach the faulty HDD
- ⑥ Attach new HDD.
- ⑦ Attach cover of DVR

### (2) HDD Format for Recording

Select the model first.

As shown below, proceed with the following order **{New}** → **{Recording-Format}**.

### 6 - 6 Network



[Figure 6-39. Setup Network Window]



### 6-6-1 Ethernet

#### (1) DHCP

This is to use a dynamic IP in the Local Area Network environment.

#### (2) Static

This is to use a fixed IP in the Local Area Network environment.

- ① Select **{Ethernet}** in **{Menu}** → **{Setup}** → **{Network}**.
- ② Select **{TCP/IP}**.
- ③ Save after filling in IP Address, Subnet Mask, Default Gateway, Primary DNS, and Secondary DNS.

### 6-6-2 DDNS

As part of the DNS system, the Dynamic Domain Name System (**DDNS**) service updates IP addresses of the host name in the real time and allocates fixed domain names to systems linked to dynamic IP addresses to allow users to use the same DNS name regardless of the change of in the IP address.

It provides dynamic DNS to ensure URL access in the dynamic IP environment.

User can monitor the remote place thru internet with web server functions which is equipped in DVR.

- ① Select On/Off of DDNS or a domain name to use by using arrow keys and the selection button.
- ② In case of DDNS On, enter the host name and save it then, the registration procedure of the host name proceeds automatically. You can enter the host name with 4-20 letters.
- ③ The host name to enter must not be pre-registered in DDNS sever. Otherwise it won't work.
- ④ The basic host name is the MAC address of appertaining DVR.
- ⑤ In case the host name have entered starts with "000c28", none of MAC address will work excepting for appertaining DVR's.
- ⑥ In case of DynDNS On, enter the host name, user name registered in DynDNS and password then, save them.



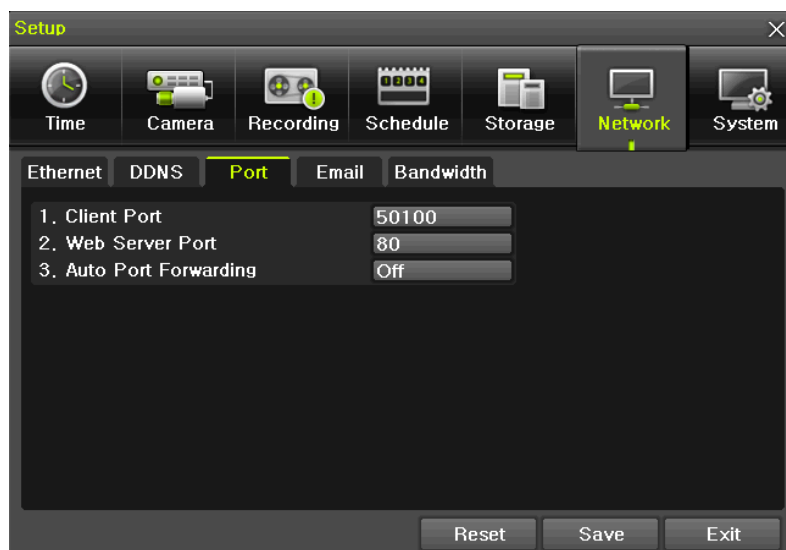
- ※ Access to DynDDNS sever(<http://www.dyndns.org>) and apply for the user account then, register the domain name to use and enter URL.
- ※ For more information, please access to the site.

### 6-6-3 Port

Move to **{Menu}** → **{Setup}** → **{Network}** → **{Port}**.

This feature is used to set the network port.

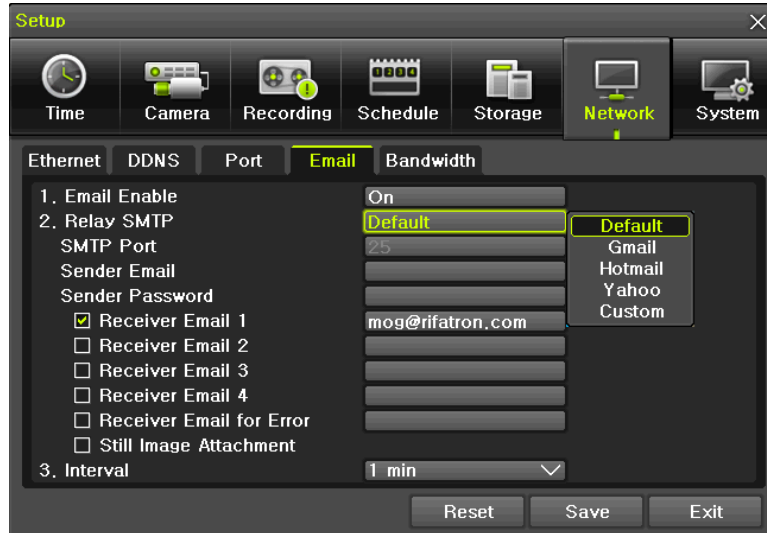
The default value is 50100; a randomly chosen value can be used depending on the network environment. The Web Server Port is used to connect the DVR remote monitoring. The Web Port Default is 80, but can be set between 2000 ~ 65527.



[Figure 6-40. Network Port Window]

#### 6-6-4 E-mail

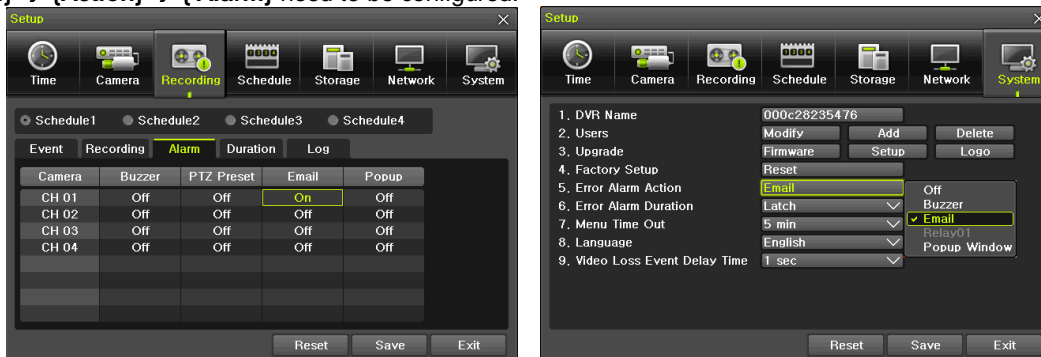
- ① Move to {Menu} → {Setup} → {Network} → {E-mail}. To use the e-mail function, DNS or sub DNS in {Menu} → {Setup} → {Network} → {Ethernet} need to be configured.



[Figure 6-41. Setup Network Ethernet Window]

This is to set automatic E-mail transmission service when an event occurs.

To use the e-mail function, {E-mail} in {Menu} → {Setup} → {System} → {9. Alarm} or {E-mail} in {Menu} → {Setup} → {Action} → {Alarm} need to be configured.



[Figure 6-42. Setup Network E-Mail Window2]

- ② Relay SMTP is set on 'Gmail' as default, but when 'Default' (in menu tab) is selected, this will be changed to dvr@cctvuser.com.
- ③ Receiver Email can be set up to 5 users (emails).
- ④ Email Interval settings are as follows [5 sec / 1 min / 3 min / 5 min / 10 min].

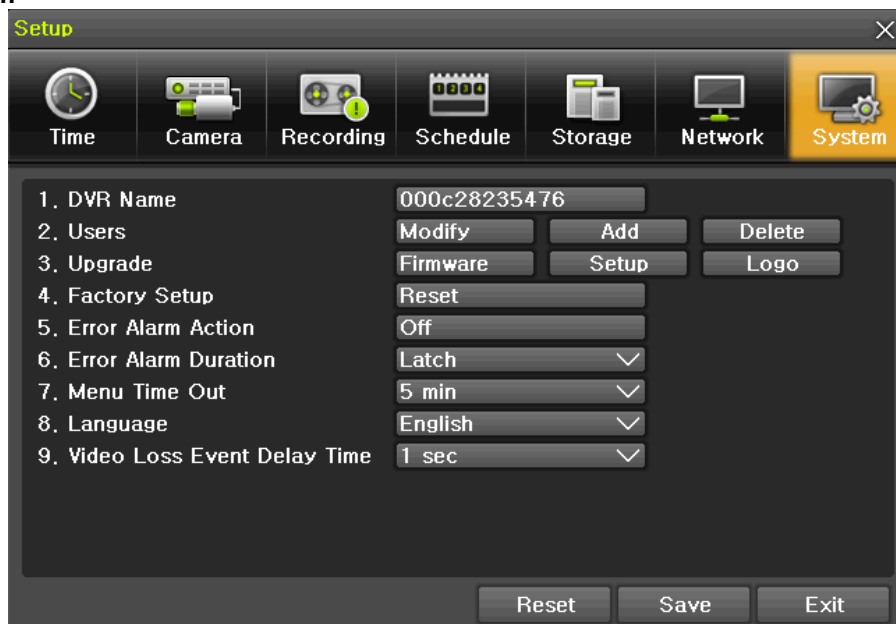
### 6-6-5 Bandwidth

Move to {Menu} → {Setup} → {Network} → {Bandwidth}.

This sets up the limit of the bandwidth to be used when bringing the live image, adjust resolution/quality and transmitting the data by using the network.

<b>Image Resolution</b>	CIF / D1 / 960H
<b>Image Quality</b>	Adjust quality of the image, as the value increases, the compression rate gets higher and image quality gets low. However the transmission rate gets higher.
<b>Bandwidth Limit</b>	You can set the network bandwidth between 40 ~ 4000kbps. As the value increases, the network transmission speed gets faster. Select Off if you do not wish to limit the network bandwidth.
<b>Transmission Codec</b>	JPEG / H.264

### 6-7 System



[Figure 6-43. System Setup Window]

<b>1. DVR Name</b>	Used to name the DVR device.
<b>2. User Registration</b>	Used to register, add, or delete users.
<b>3. Upgrade</b>	Upgrades the system firmware/system setup
<b>4. Factory Setup</b>	Initialize Setup.(Factory default value, except for the network value)
<b>5. Error Alarm Action</b>	Set the alarm On/Off and alarm format.
<b>6. Error Alarm Duration</b>	Set the alarm time by continuous/5/10/15/User setting
<b>7. Menu Time Out</b>	Used to set the time for exiting the System Setup menu automatically and displaying the real-time monitoring screen.
<b>8. Language</b>	System OSD language setting
<b>9. Video Loss Event Delay time</b>	Set the delay time between Video Loss event and next event

### 6-7-1 DVR Name

. The initial value is the Mac address. (It supports up to 20 letters for the system name.)

### 6-7-2 User Registration

※ Add, edit, or delete the users who will operate the system and give authorities to users as shown below.

System Access Authorization	
<b>Network Live</b>	View the real-time images upon network access.
<b>Playback</b>	View the recorded images.
<b>Copy (download)</b>	Copy and download files.
<b>PTZ camera</b>	PTZ camera control
<b>Setup</b>	Recording, schedule, system, storage, Time, PTZ, network, Screen setup
<b>Network Upgrade</b>	Remote network upgrade
<b>Covert channel monitoring</b>	View the covert channel in the network.



Up to 15 users can be registered. Letters for ID and Password can be entered up to 30.

### 6-7-3 Upgrade

The firmware and menu setting of the product can be easily upgraded through the use of the external storage devices or portable storage devices with USB 2.0 port.

※ Find and copy the upgrade file to the highest folder in the external storage device or portable storage device supporting USB 2.0.

※ Connect the storage device with an upgrade file stored to USB 2.0 port at Right front panel.



1) After copying the upgrade file, be advised to get rid of the USB device with safety removal mode from PC.  
2) If the USB device is disconnected from the USB port while the upgrade file is being copied, the DVR system may not automatically detect the file.

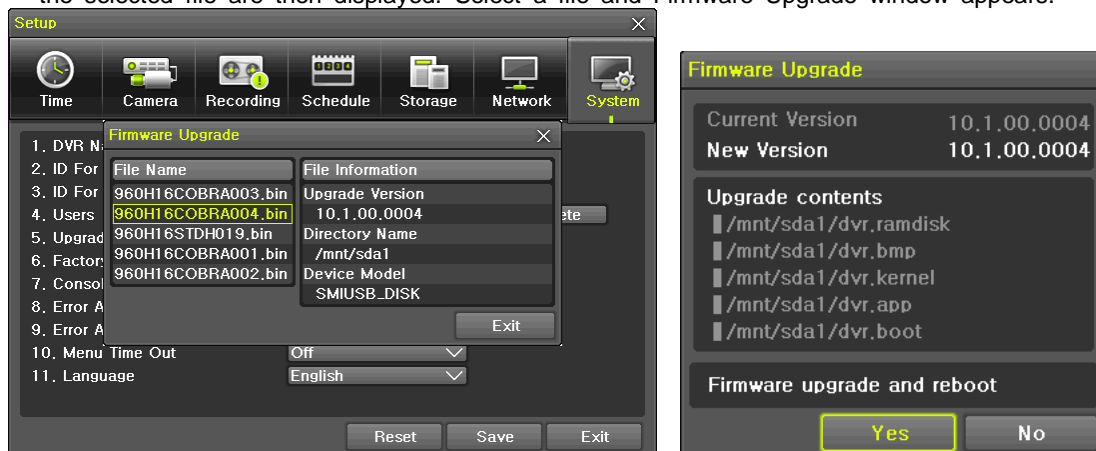


Caution

Removing USB during the upgrade in progress may cause damage on the system.  
The system starts over when the upgrade is completed.

### (3) Firmware Upgrade

① Select **{Firmware}** and the upgrade file list stored in the selected device and simple version info of the selected file are then displayed. Select a file and Firmware Upgrade window appears.



[Figure 6-44. Firmware Upgrade Progressing Window]




※ Downgrading to a previous version is not supported.  
※ The upgrade information window will then appear within 15 seconds.

- ② Read the information and select {Yes} to start the upgrade gradually. Select {No} to return to the {System} mode.
- ③ After the upgrade is completed, the system reboots.
- ④ Move to {Menu} → {Miscellaneous} → {DVR Information} → {3. Software Version} to check the version.


#### (4) Setup Upgrade

- ① Select {Setup} and the upgrade file list stored in the selected device and simple version info of the selected file are then displayed.
- ② Select a file and then the upgrade starts immediately.

 Caution	Select a file and then the upgrade starts immediately. All setting values of the current menu will be changed to the upgrade setting values.
--	--

#### 6-7-4 Factory Setup


- ① Move to {Menu} → {Setup} → {System} → {7. Factory Setup}.
- ② Select {Yes} when Initialization (Yes/No) Window appears.

 Caution	Note that all setting data will be initialized. ※ All values go back to Factory Default Value.
--	---

#### 6-7-5 Error Alarm

Alarm is to notify system incidents [Video Signal loss/ HDD full/ FAN fail/ HDD fail/ HDD warning] through [Buzzer/ E-mail/ Relay01/ System check].

Select each [Off/Buzzer/E-mail/Relay01/Popup Window] by ticking.

	<b>Warning</b>	
	<ul style="list-style-type: none"> <li>✓ Video Loss</li> <li>HDD Full</li> <li>HDD Not Detect</li> <li>Fan Failed</li> <li>Storage Failure</li> <li>Storage Warning</li> <li>Sensor Connection Tamper</li> </ul>	
	<b>OK</b>	
		<p>※ Popup Window Setup at {Menu} → {Setup} → {System} → {9. Alarm}. Popup Window is to pop up the system check window in the monitoring screen as shown. it indicates [Video Signal loss/ HDD full/ HDD Not Detect / FAN fail/ Storage Fail/ Storage Warning / Sensor Connection Tamper].</p>

#### 6-7-6 Error Alarm Duration

- ① It sets the duration of the alarm triggered by the recording and system event.
- ② Move to {Menu} → {Setup} → {System} → {10. Alarm Duration}.
- ③ In the selection window, set Alarm Duration by using the arrow keys and the Select button.

#### 6-7-7 Menu Time Out

If no input is made in the System Setup menu from the front buttons, remote controller and mouse, the system automatically shifts to the real-time monitoring mode.

- ① Move to {Menu} → {Setup} → {System} → {11. Menu time Out}.
- ② In the selection window, select the time zone you want to set by using the arrow keys and the select button.

<b>Off</b>	The Automatic Menu Exit is not used. ※ The user can exit the menu by pressing the [ESC] button in the System menu.
<b>1/2/3 MIN</b>	If there is no input from the front button, remote controller, or mouse, the system will shift to the real-time monitoring mode.

<b>User Setting</b>	The user can enter the time directly. ※ The time can be set to 1 ~ 60 minutes.
---------------------	---

- ③ Selecting the User Setting causes the input window to appear.
- ④ Enter the time by using the numeric buttons or the arrow keys and the Select button.

#### **6-7-8 Language**

This feature is used to select the language for the On Screen Display (OSD) menu of the system. 18 languages are supported.

#### **6-7-9 Video Loss Event Delay time**

This feature is used to setup the delay time between events before display the "Video signal loss" event.

## APPENDIX

**A/P/P/E/N/D/I/X**

### Recommended PTZ Camera Protocol

NO	Vendor	Model	Protocol
1	A.D.	ULTRA_7	SENSORMATIC
		ULTRA_8	
2	CHOU	COHU3925	COHU
3	Dongyang	Dongyang	DRX-500
			DY-255
4	DYNACOLOR	DSCP	DSCP
5	ERNITEC	ERNITEC	ERNITEC
6	EYE VIEW	EYE VIEW	EYE VIEW
7	FINE SYSTEM	CRR-1600i/s	CRR-1600i/s
8	GE	GE	GE_KARATEL
9	GSP	GSP	CYBERSCAN_1
10	HITRON	FASTRAX2	FASTRAX2
11	HONEYWELL	SCANDOME2	HSDN-251
12	LG	LG	LG_MULTIX,
			LG_OLD
13	LINLIN	LINLIN	LINLIN
14	MIKAMI	MIKAMI	MIKAMI
15	ORIENTAL	ORX-1000	ORX-1000
16	PANASONIC	WVCS854	WVCS854
17	PELCO	PELCO	PELCO – D
			PELCO - P
18	PHILIPS	PHILIPS	PHILIPS
19	PROLINE	PROLINE	PROLINE_UK
20	RIFATRON	RIFATRON-1	RIFATRON
21	SAMSUNG TECHWIN	SAMSUNG	SPD-1600
			SCC641
22	SUNJIN	SUNJIN	SUNJIN
23	VICON	VICON	VICON
24	VISION_HI_TECH	VISION_HI_TECH	VISION_HI_TECH
25	YOKO	YOKO	YOKO

# User's Guide

